



TCC Intercom System Instruction

Content

1. Management Center

- 1.1 PC configuration request, install the software
- 1.2 Project configure and Room No. generate
- 1.3 Terminal information auto generate module
- 1.4 Configure the Outdoor Stations
- 1.5 Configure the management center info
- 1.6 Entrance IC/ID card issue
- 1.7 Message publish
- 1.8 Device version update through the management center.
- 1.9 Data management and backup.

2. Indoor Monitor Configure

- 2.1 U9 Android system touch screen
- 2.2 3000 Linux system touch screen
- 2.3 3000 Linux system non touch screen

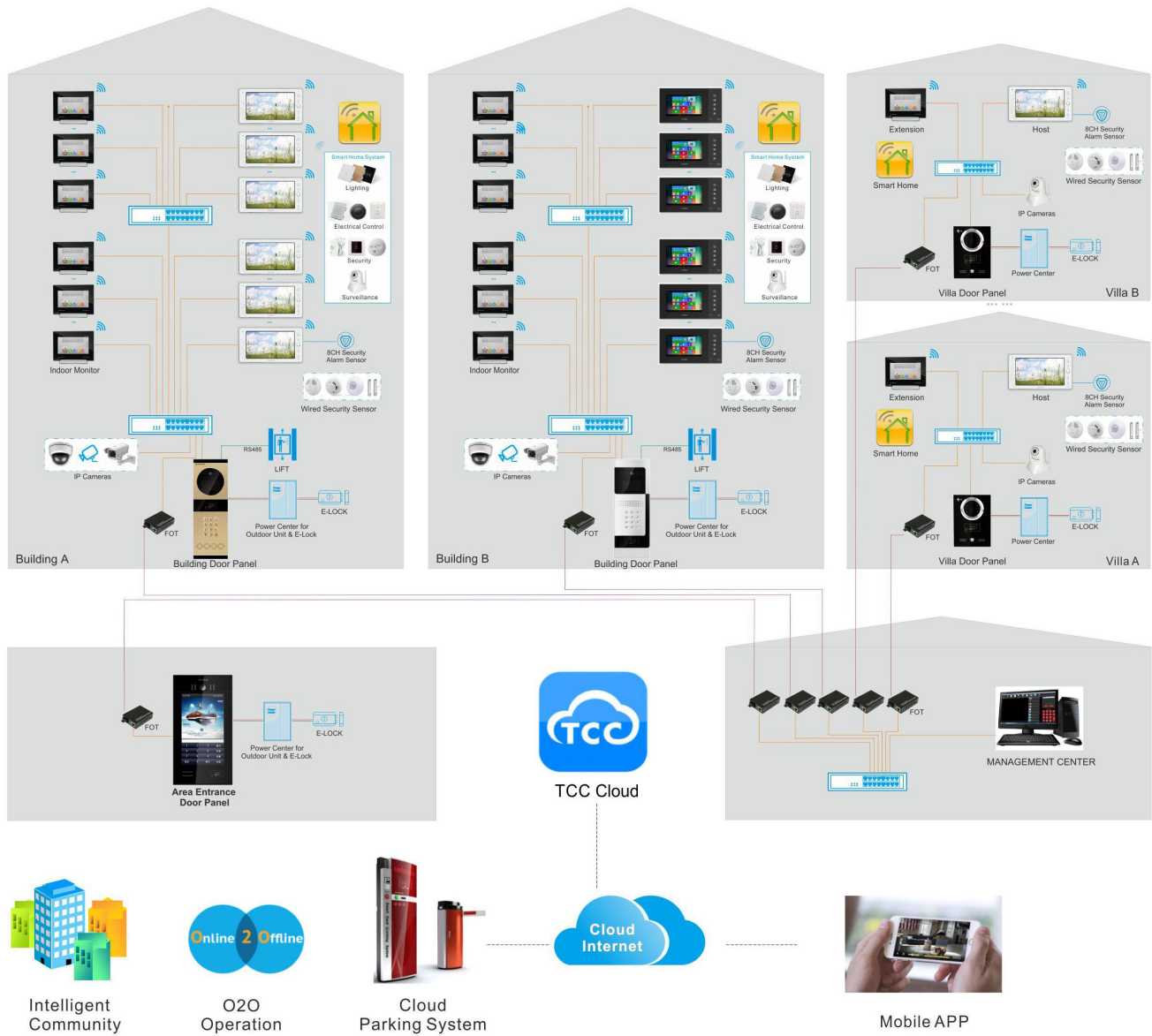
3. Outdoor Panel Configure

- 3.1 Digital keypad outdoor panel
- 3.2 Digital touch screen outdoor panel

System Network Diagram

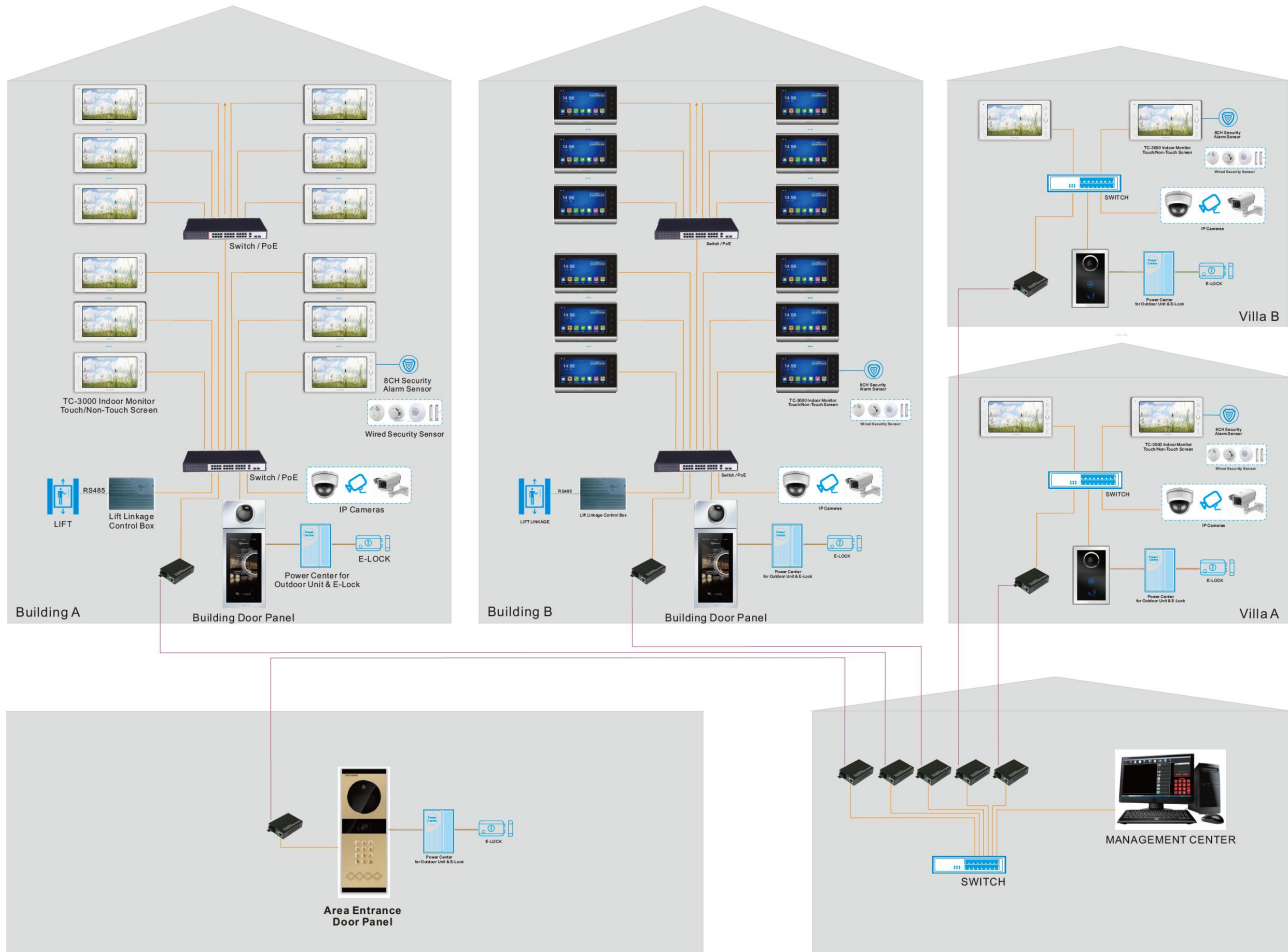
TC-U9 System

- Android OS



TC-3000 System

- Linux OS



1. Management Center



PC - Management Center



MIC



Speaker



Camera

1.1 PC configuration request

CPU : INTEL Pentium Dual Core 2.8G or above

RAM : 2G or above

HDD request : 100M or above free storage in Disc C; 50G or above free storage in disc D (Save the date base or call records or pictures records)

Display : 19" LCD, Resolution 1440X900

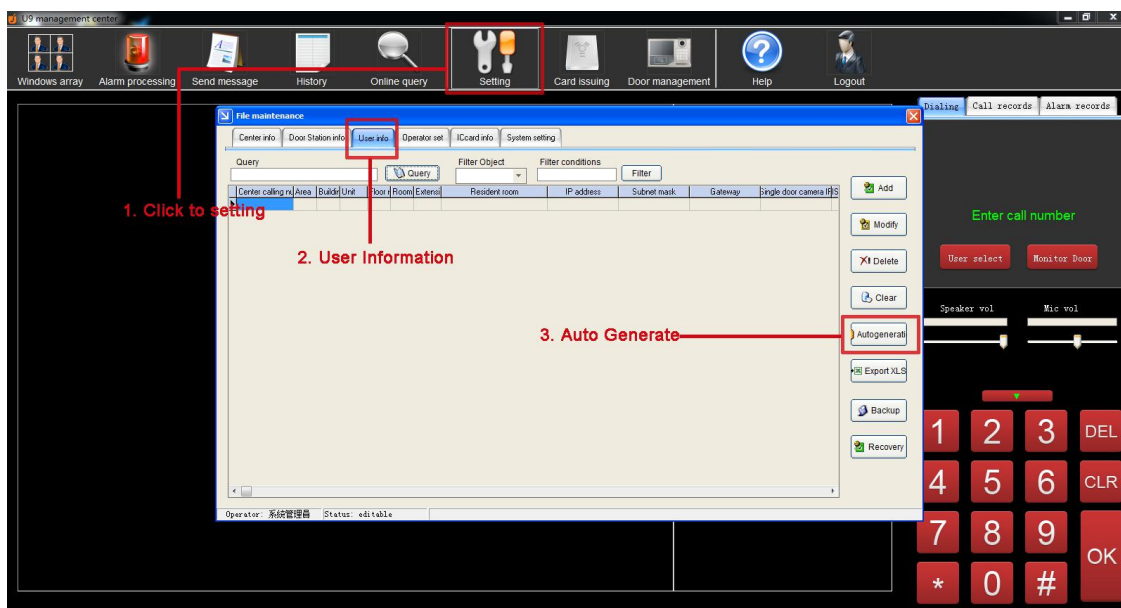
Network : 100M or above LAN

Others : USB Camera, Mic, Active Speakers

OS : WINDOWS XP or WINDOWS 7 (32 bit)

OFFICE 2003 or above

1.2 Project configure and Room No. generate

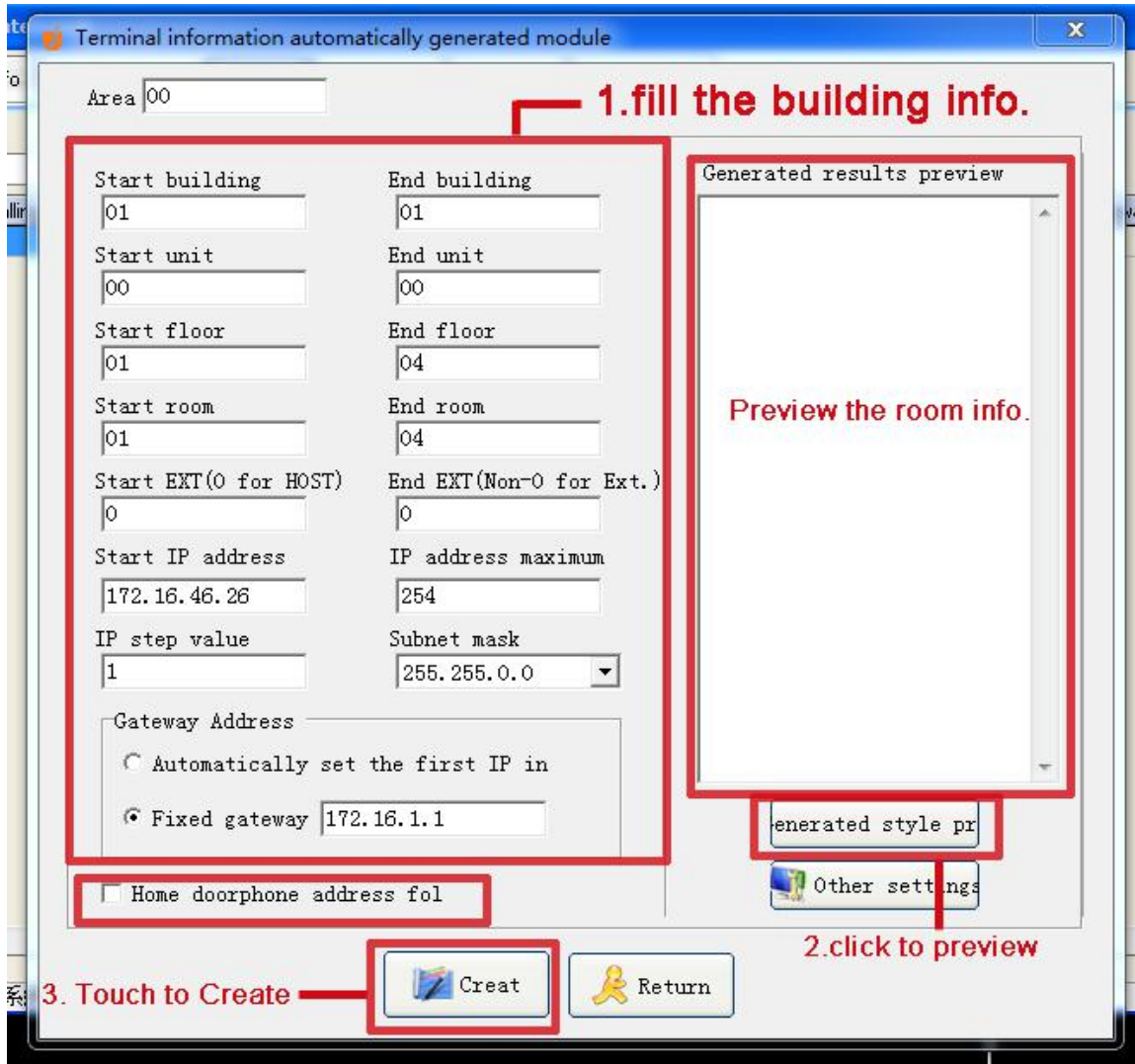


Click the "Setting" to setting menu.

Click "User info" tab to enter the create menu

Click auto generation to open the "terminal information automatically generate module"

1.3 Terminal information auto generate module



Terminal information automatically generated module

Area

1. fill the building info.

Start building <input type="text" value="01"/>	End building <input type="text" value="01"/>
Start unit <input type="text" value="00"/>	End unit <input type="text" value="00"/>
Start floor <input type="text" value="01"/>	End floor <input type="text" value="04"/>
Start room <input type="text" value="01"/>	End room <input type="text" value="04"/>
Start EXT(0 for HOST) <input type="text" value="0"/>	End EXT(Non-0 for Ext.) <input type="text" value="0"/>
Start IP address <input type="text" value="172.16.46.26"/>	IP address maximum <input type="text" value="254"/>
IP step value <input type="text" value="1"/>	Subnet mask <input type="text" value="255.255.0.0"/>

Gateway Address
☐ Automatically set the first IP in
☒ Fixed gateway

☐ Home doorphone address fol

Generated results preview

Preview the room info.

2. click to preview

3. Touch to Create

Fill the module according to real building information.

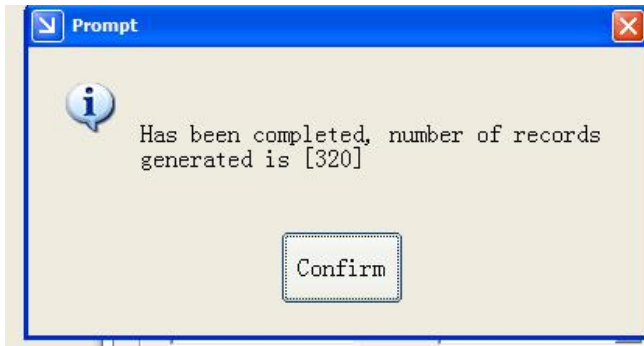
Project data available setting with each Area, each building, each unit, each floor, each room, and extension number for each room.

Click the Generated style preview to check the data.

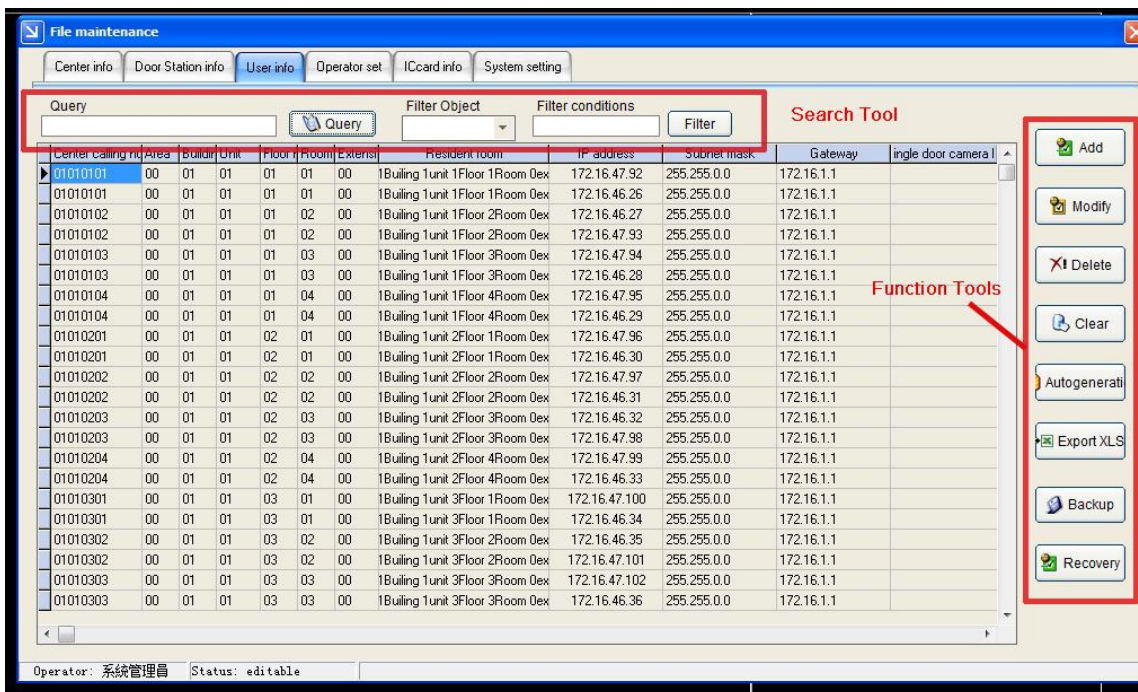
Click "create" to the room no. automatically. (User info)

Note: If there is a single door unit, please mark on the "home Door phone fol." And the "IP step value" should be "2"

When click “create” button, the system would prompt date create successful as bellow

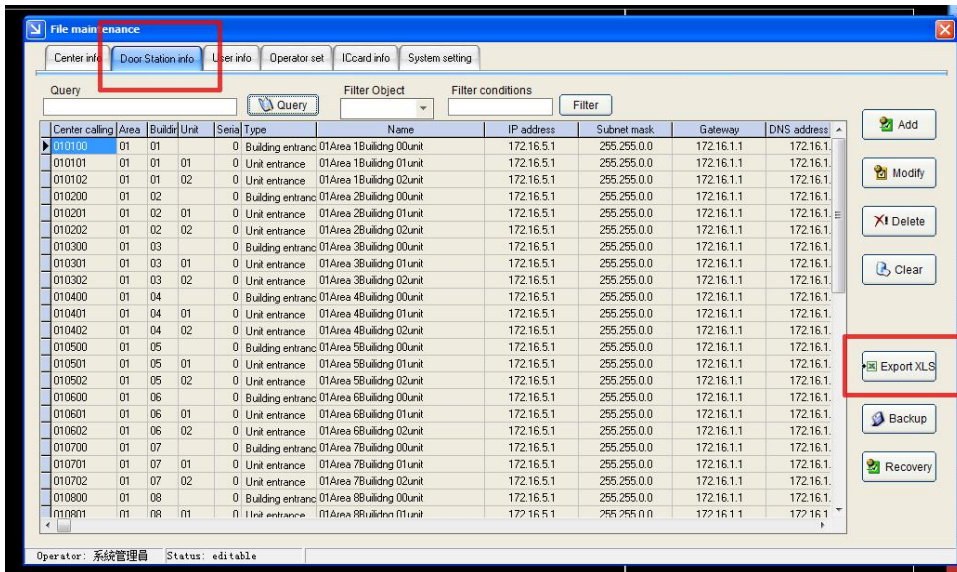


The date information as bellow:

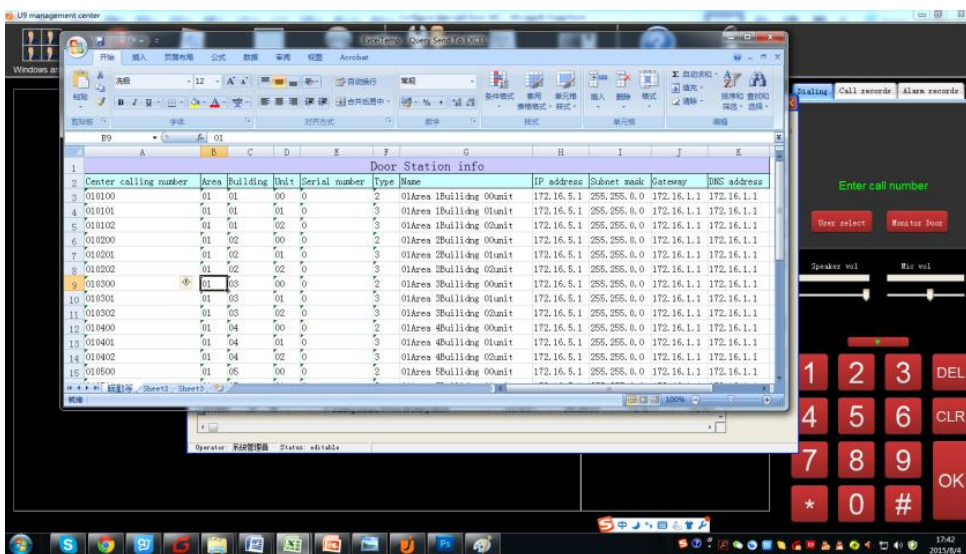


1.4 Configure the Outdoor Stations

Click to open the tab of “door station info.”



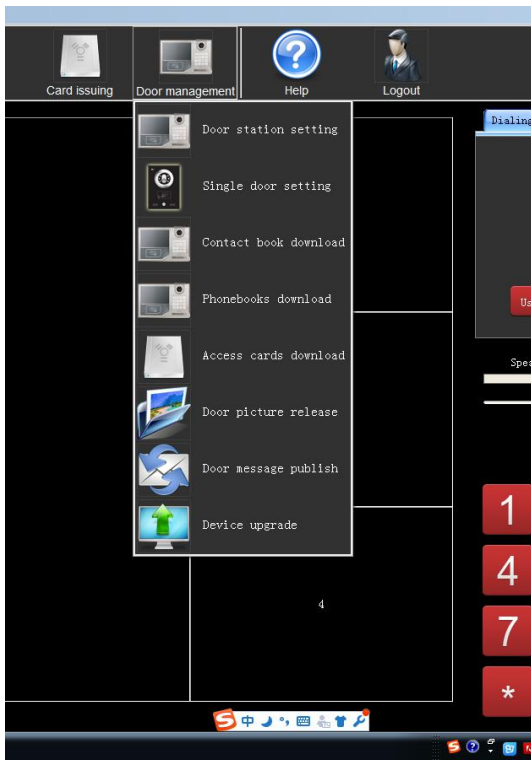
Export the door station IP list to excel file



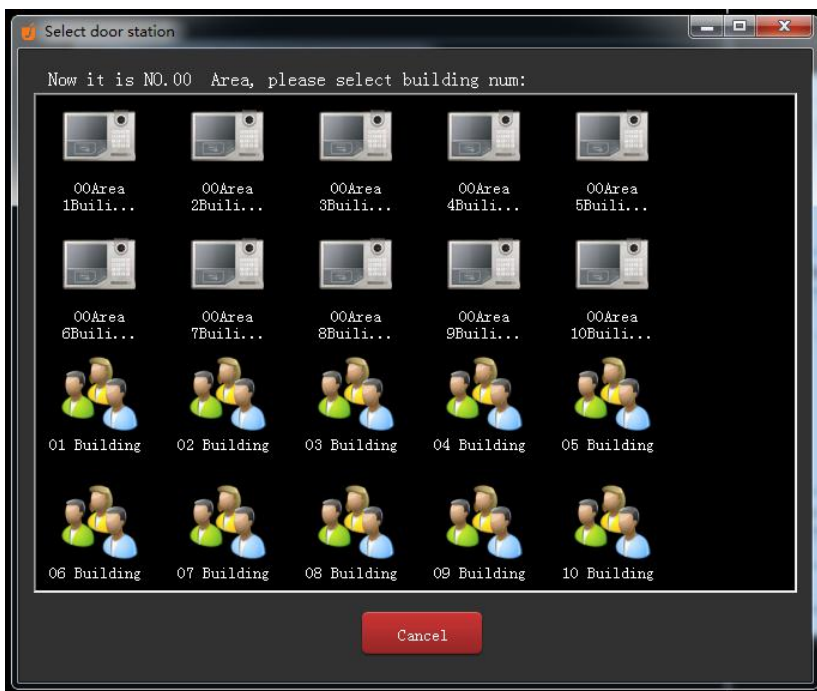
Printing the excel file and configure the door station manually for project.

A. Batching setting door station.

Click here to open station setting menu



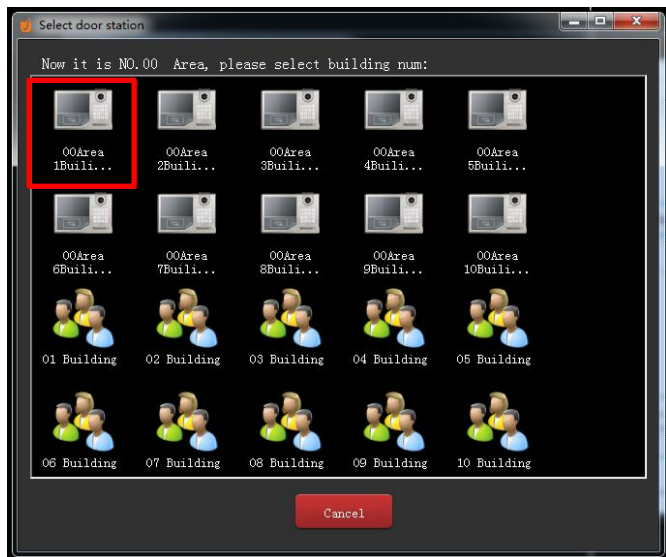
Click door station setting to batching setting the door station. And get bellow date list.



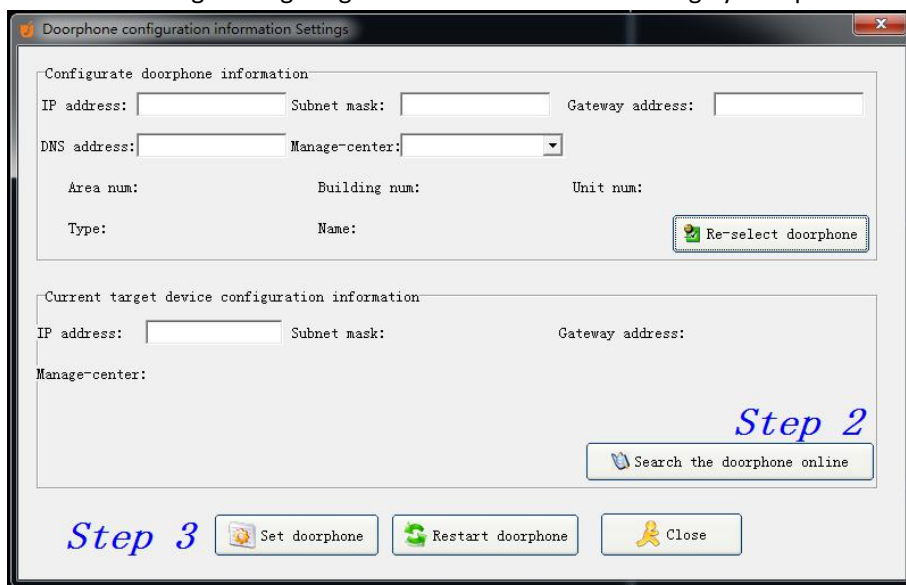
Door station list

Note: this menu are the finished date of door station, which are created from user info. not the online devices

Choose one of the station date file to configuring.

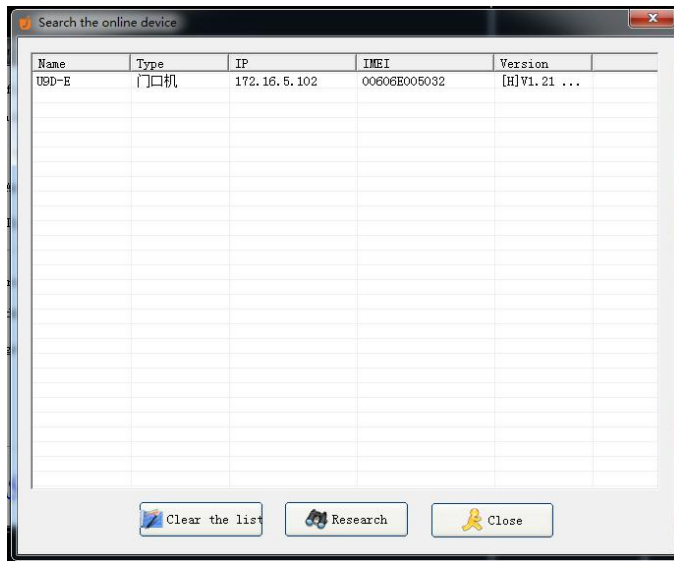


If the want change configuring date Click “re-select” to change your option

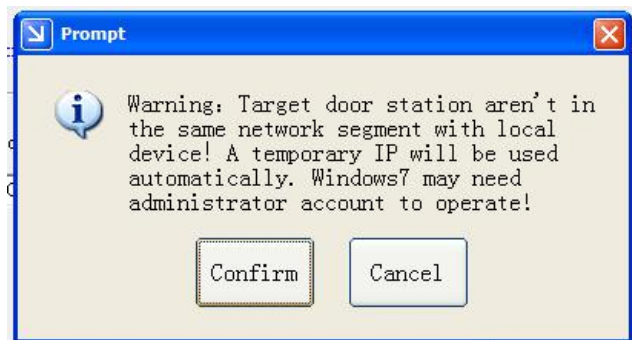


Click the Search the doorphone online to go step 2

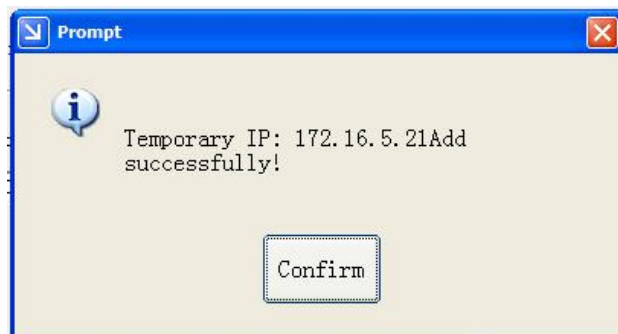
Here are the online door station list. The engineer could choose each of the online device here.



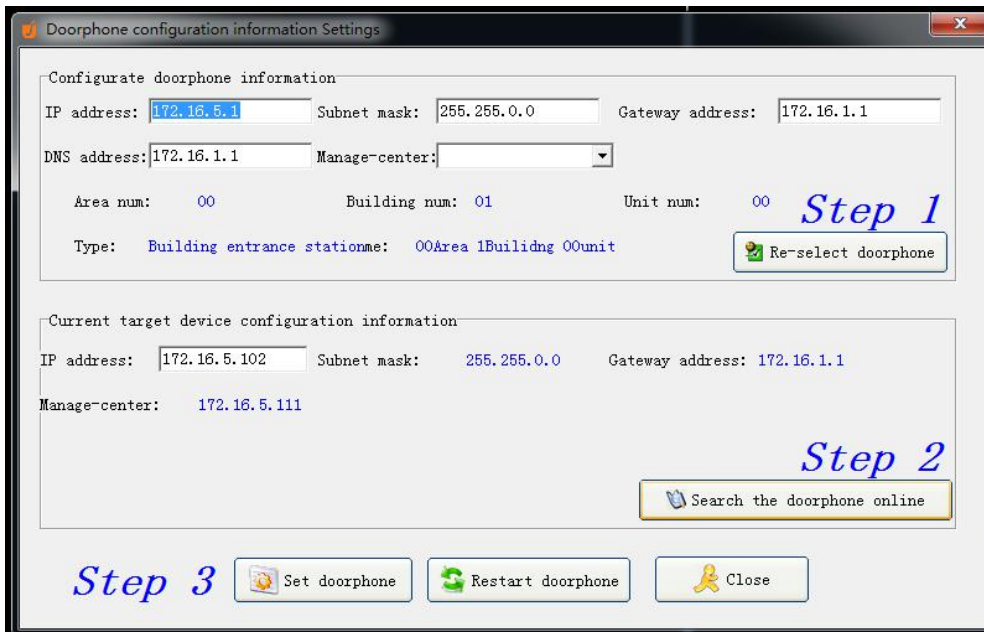
Click to confirm and get bellow prompt



Click confirm to configure the door station date to the device and go to step 3



Here are the date information which has been configured to the door station.



Doorphone configuration information Settings

Configure doorphone information

IP address: 172.16.5.1 Subnet mask: 255.255.0.0 Gateway address: 172.16.1.1

DNS address: 172.16.1.1 Manage-center: [dropdown]

Area num: 00 Building num: 01 Unit num: 00

Type: Building entrance station name: 00Area 1Building 00Unit

Step 1

Re-select doorphone

Current target device configuration information

IP address: 172.16.5.102 Subnet mask: 255.255.0.0 Gateway address: 172.16.1.1

Manage-center: 172.16.5.111

Step 2

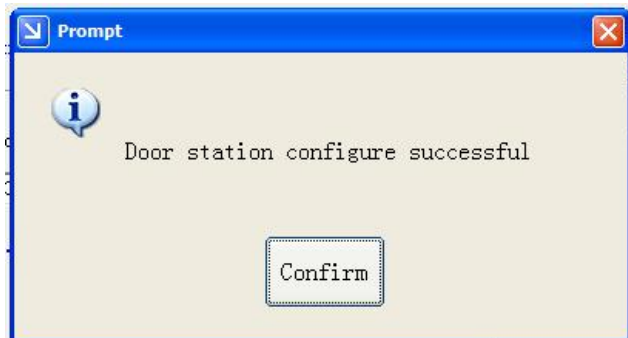
Search the doorphone online

Step 3

Set doorphone Restart doorphone Close

Click "Set doorphone" to finish the configuration

Click confirm to finish



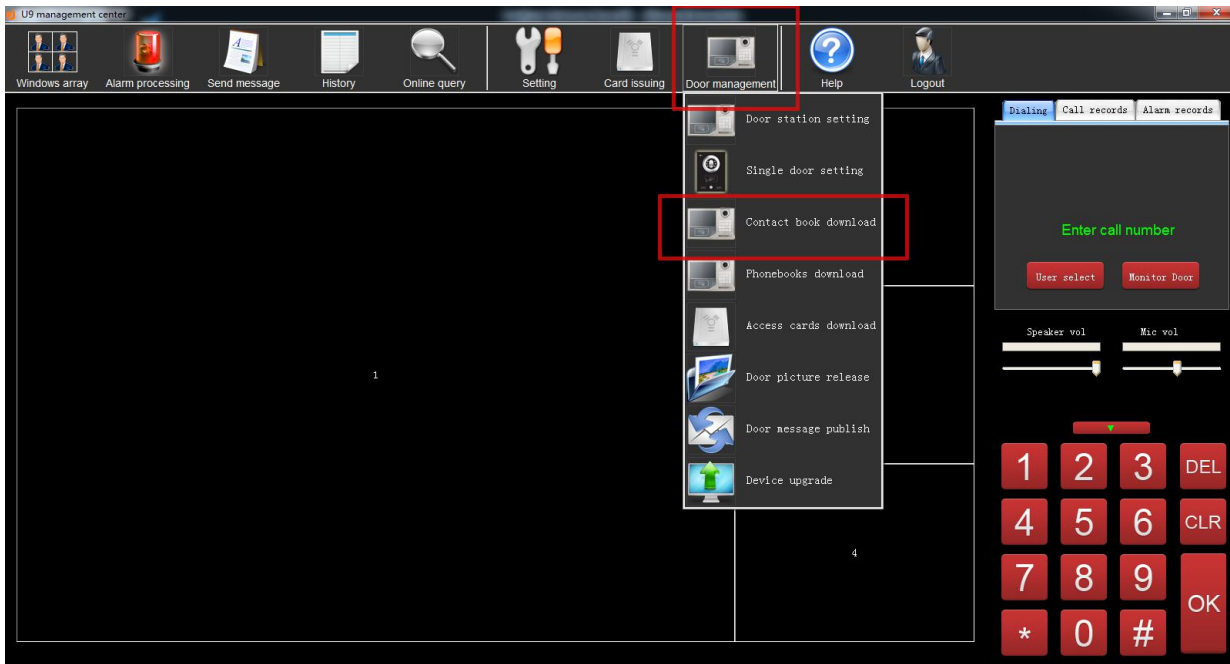
Prompt

Door station configure successful

Confirm

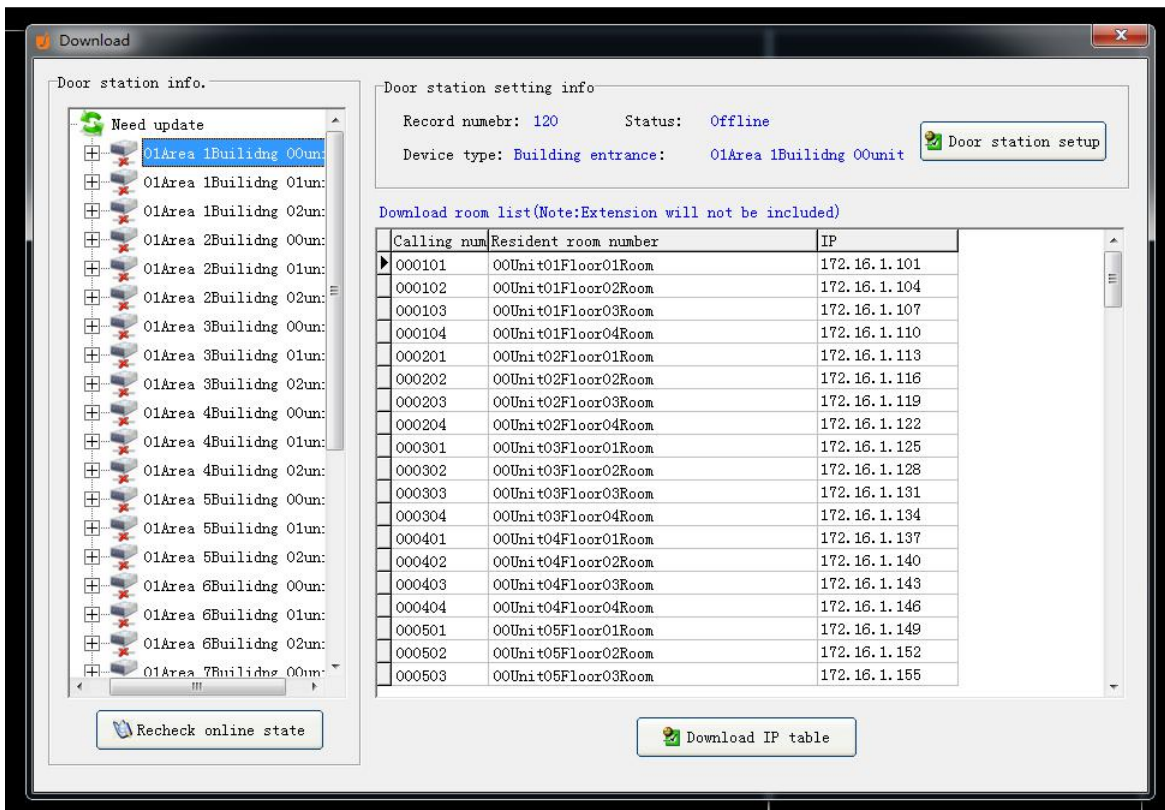
B. Download contact book to door station

After setting the IP address for the door station, User should download the corresponding contact book to each of the door station



Enter the door station setting menu, and click to open the contact book download menu

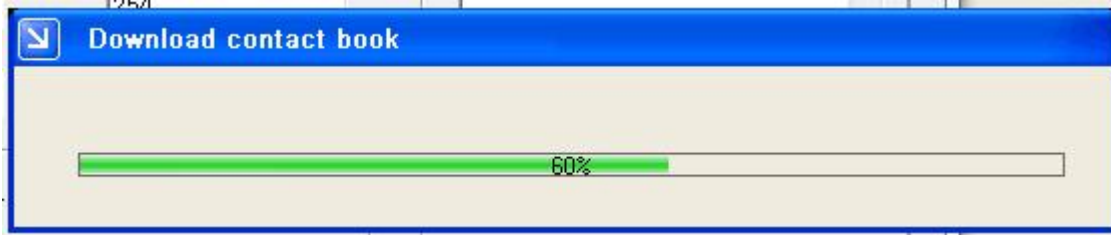
Choose the door station, make sure the door station are on line. If not, there would have a "X" on the icon.



Corresponding indoor monitor list (contact book) of the door station

Click "download IP table" to download the indoor monitor list to the outdoor station

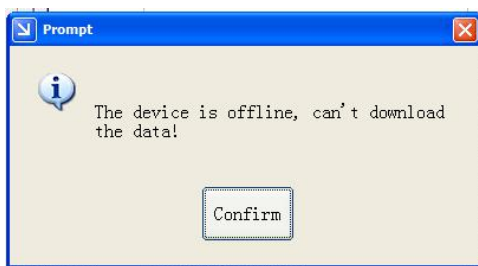
When the contact book downloading, the system would prompt the process bar as bellow



After finishing the download, the system would prompt as bellows



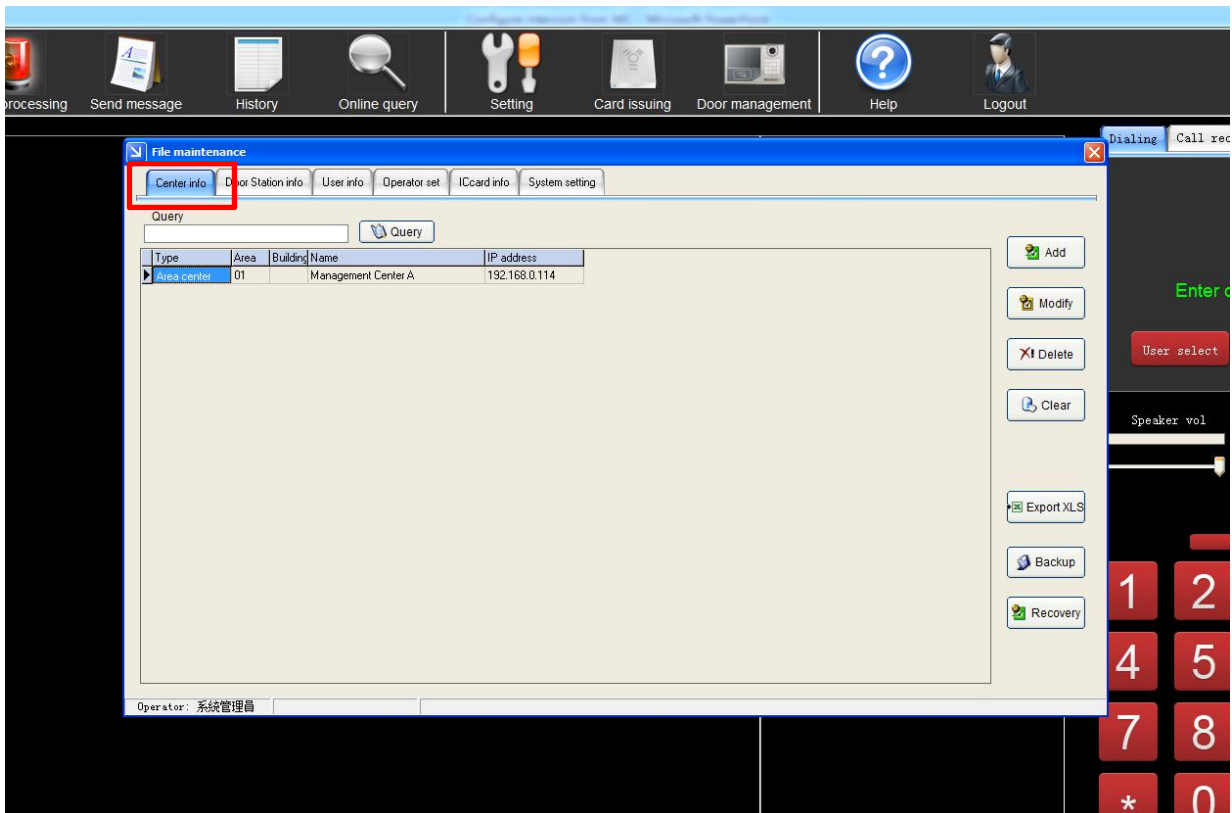
Note: This means download successful



This means download fail, user should check if the outdoor station connect with management center correctly.

1.5 Configure the management center info

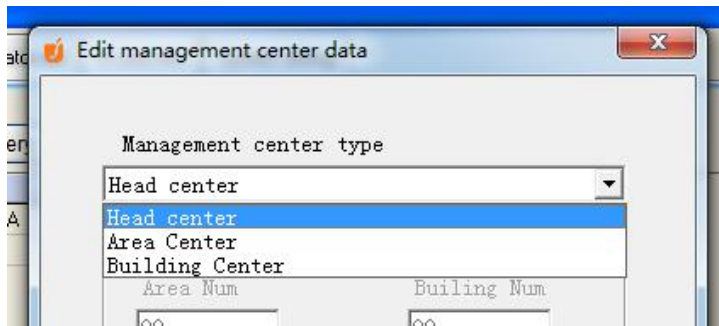
Click “Setting” to enter setting menu, and Choose the Tap of “center info”



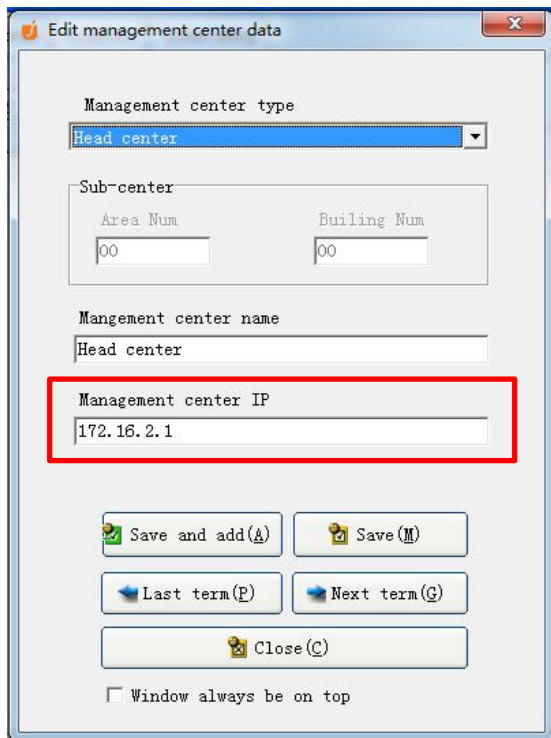
Click “Add” to add management center information, go to next step.

Note: When the software installed in the PC, there would have a default management center info in the list.
If the building project don't need management center to manage all intercom device, then the user no need to configure the management center.

Choose a type of the management center.



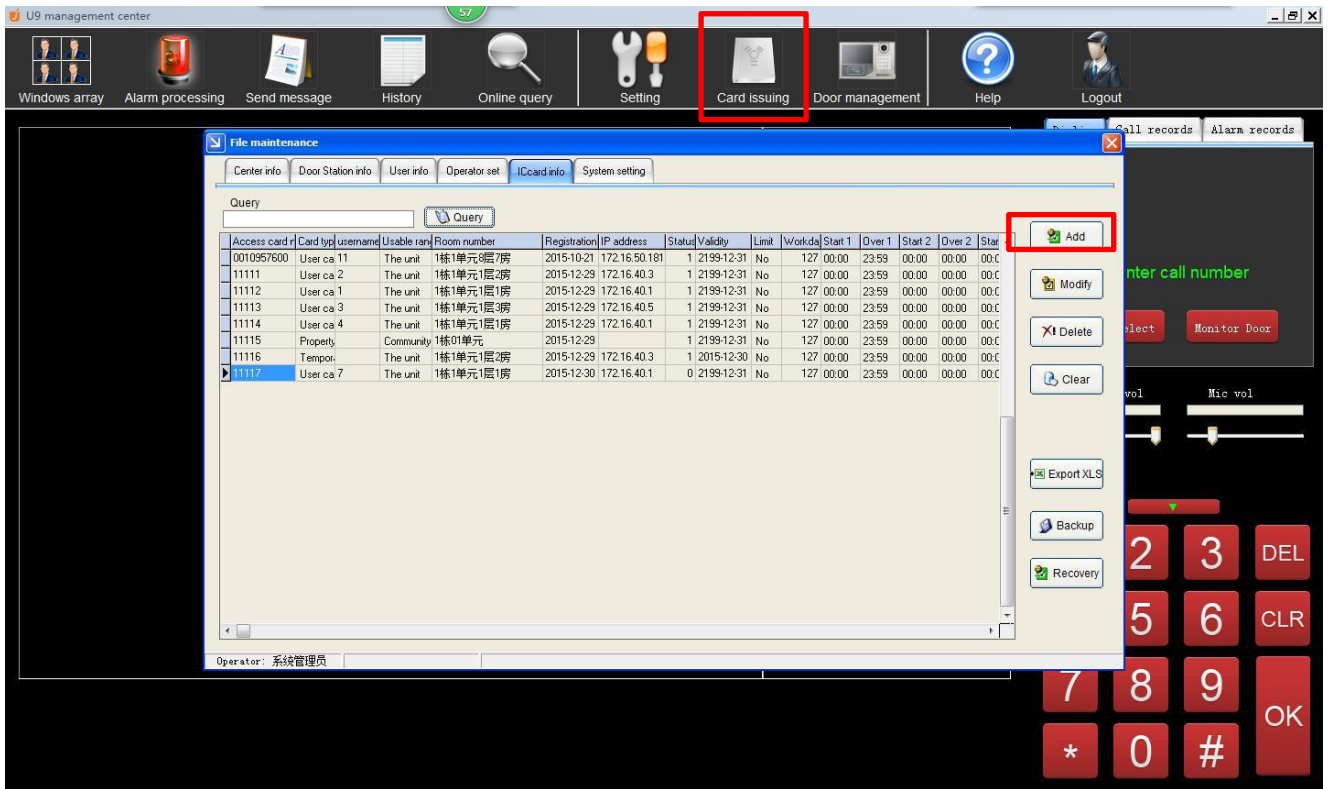
Enter management center IP here, make sure the IP address same as local PC IP.



Click to save and finish the setting.

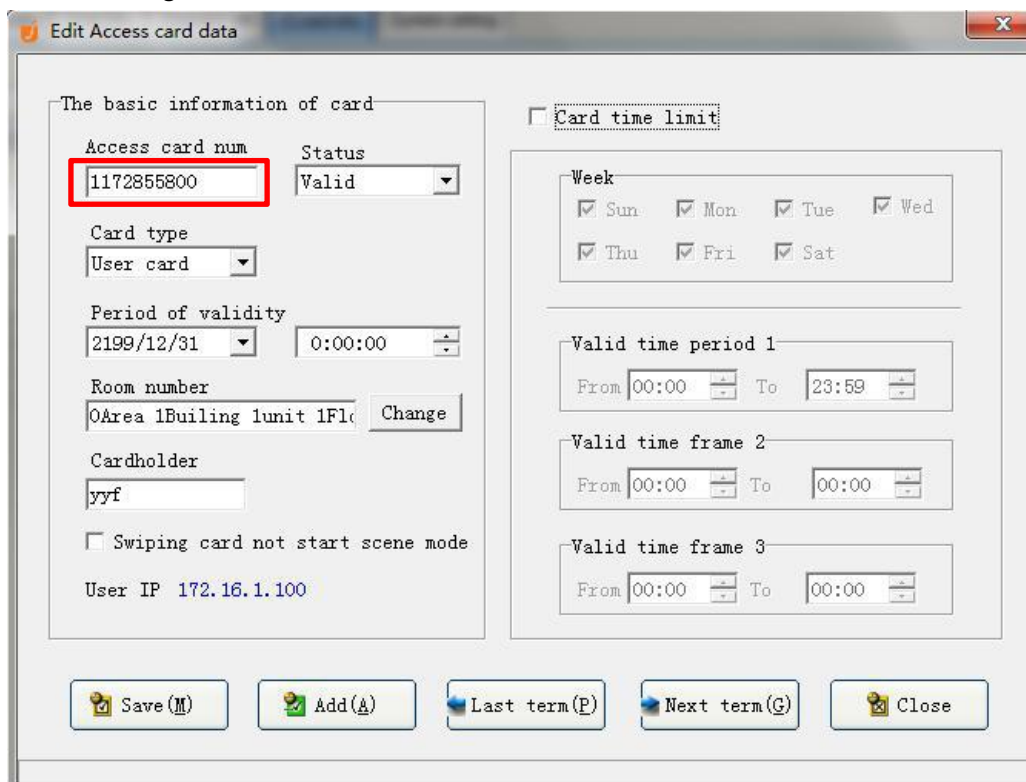
1.6 Entrance IC/ID card issue

Properly connected the USB card reader, and the IC/ID cards. Enter the center management software, click the card issuing

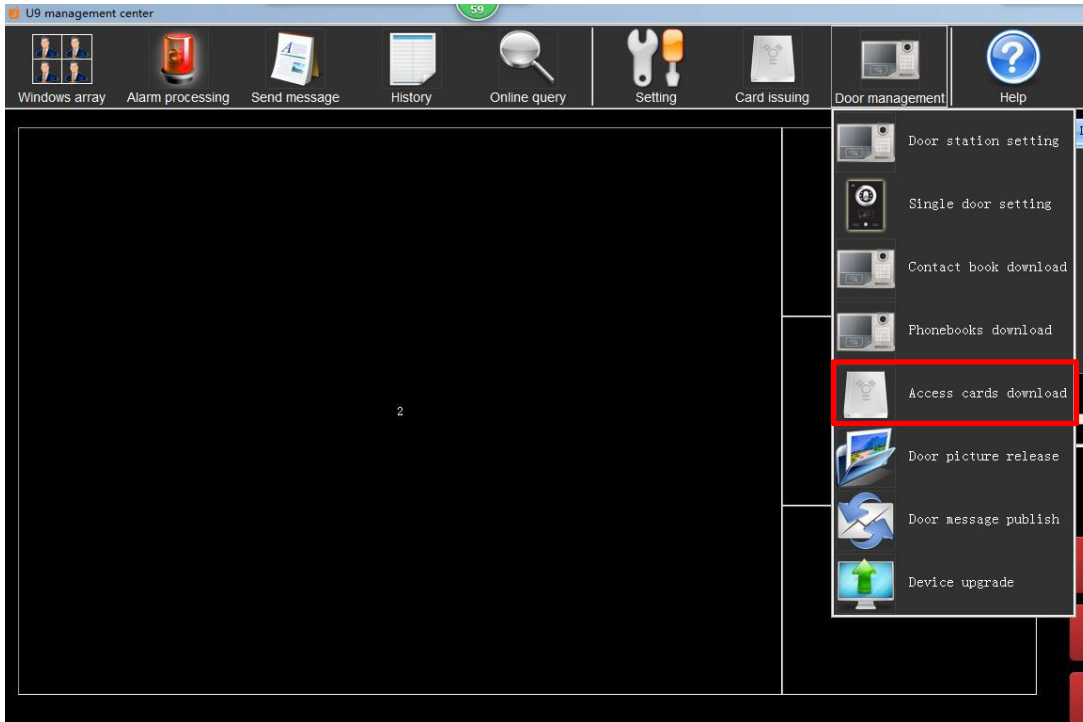


Add a new card or double the data to edit it.

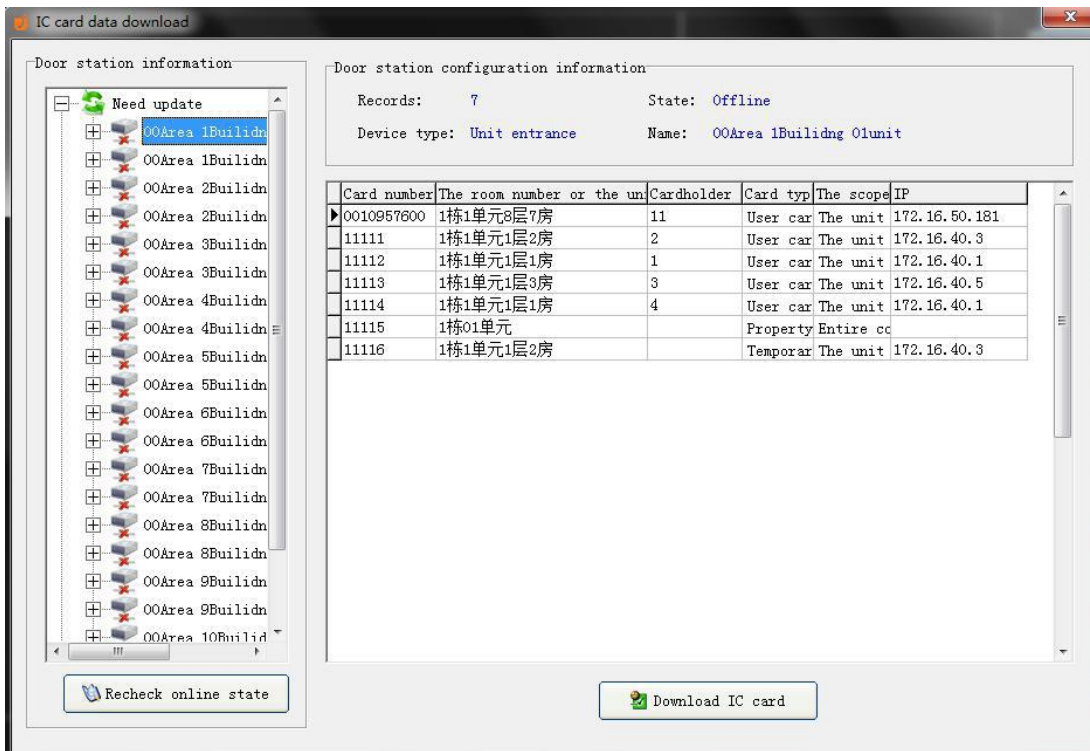
Put the card on the card reader, the Management center display the card number automatically, click "Save" after edit and configure the card.



After edit the card data, you need to download the card data to the corresponding outdoor machine, confirm that the network management center and the door machine was connected. Enter the center management software, click on the door machine management -> Access cards download.

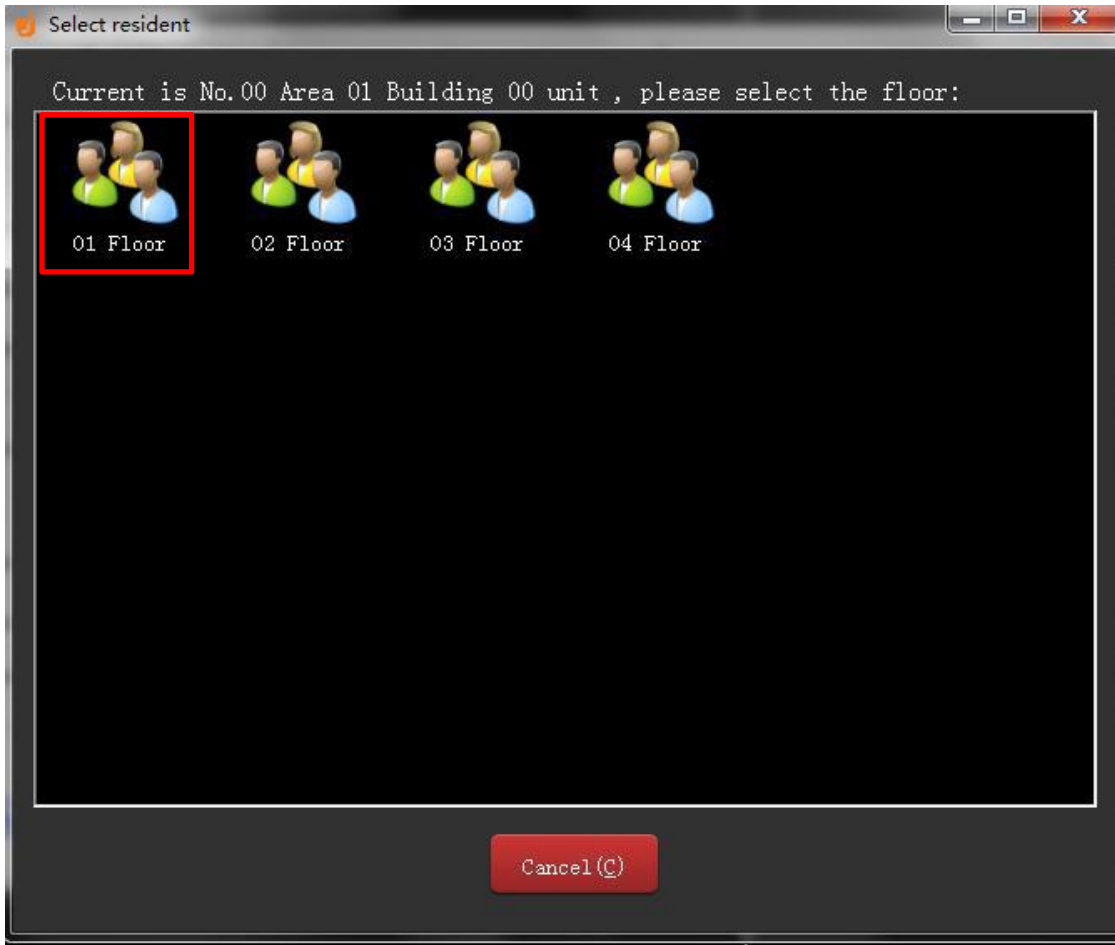


Popup the download interface as following:

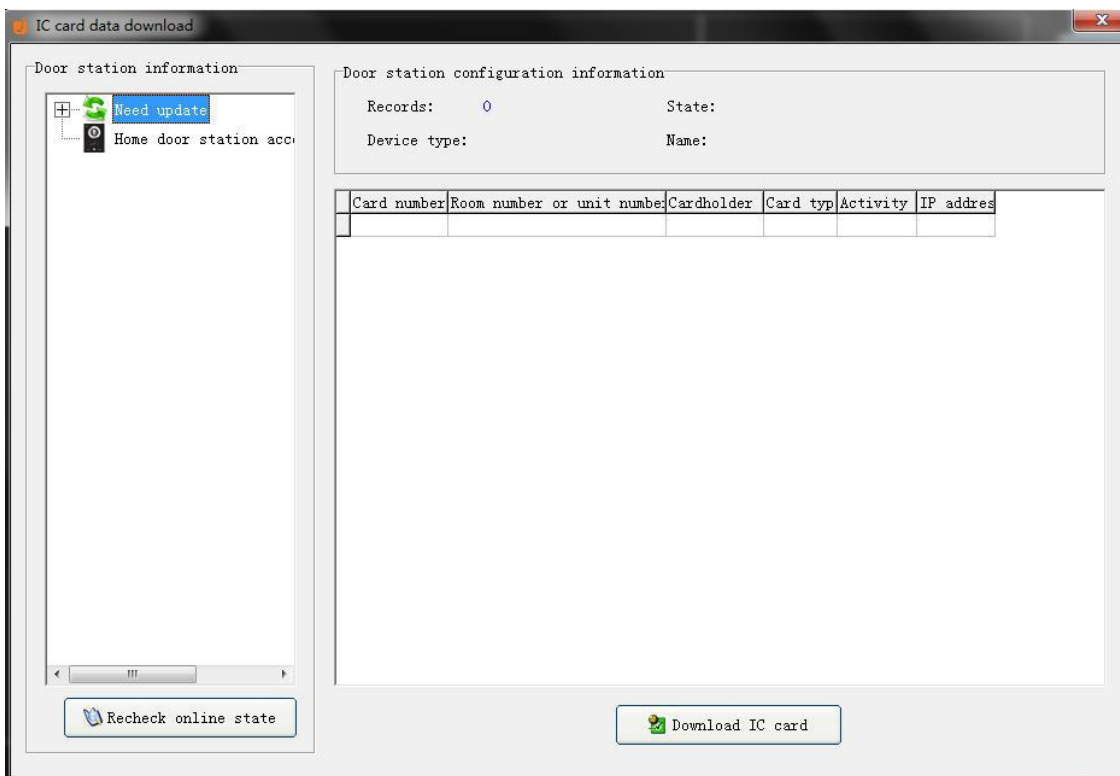


choose the outdoor device need to download data, and press the Click download IC card, to finish the data download to outdoor unit.

If there is need to config each home outdoor unit with Card login, please select the corresponding home door station and download the IC card data.



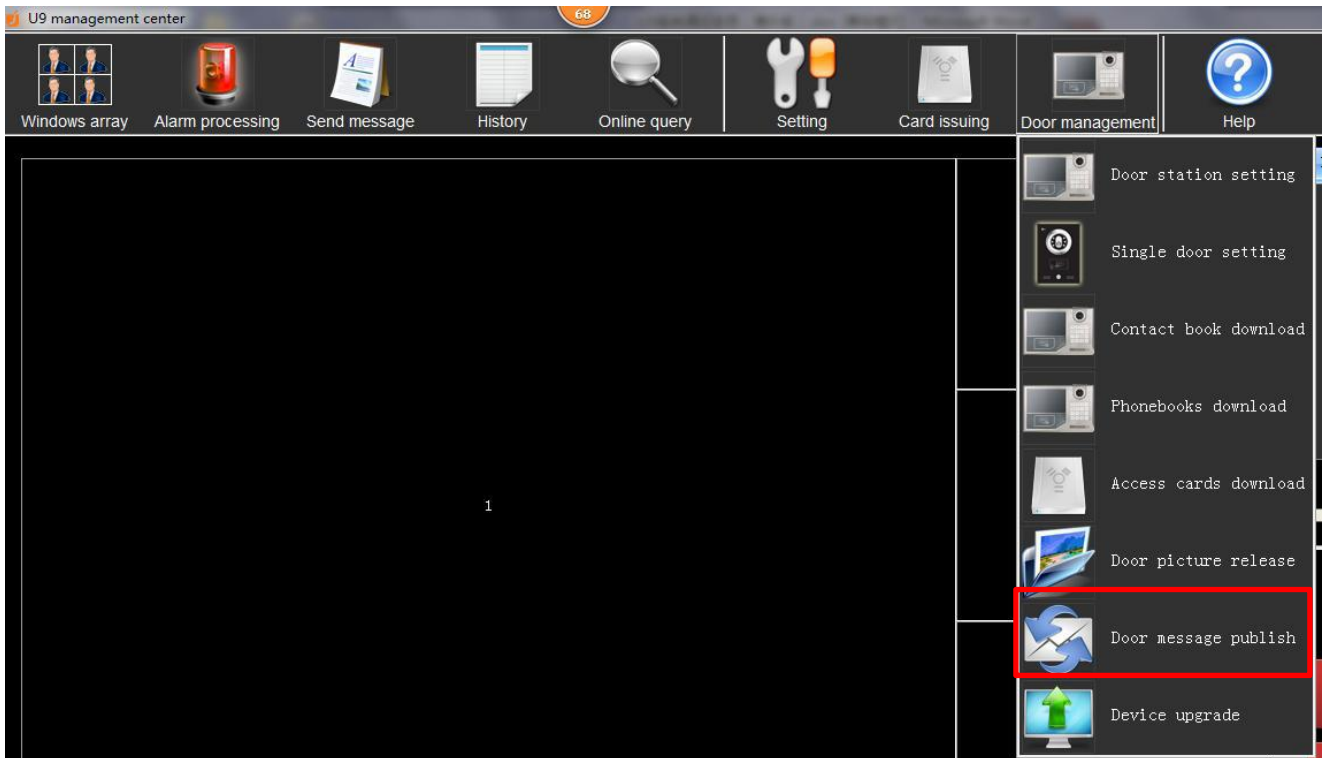
Choose corresponding room number



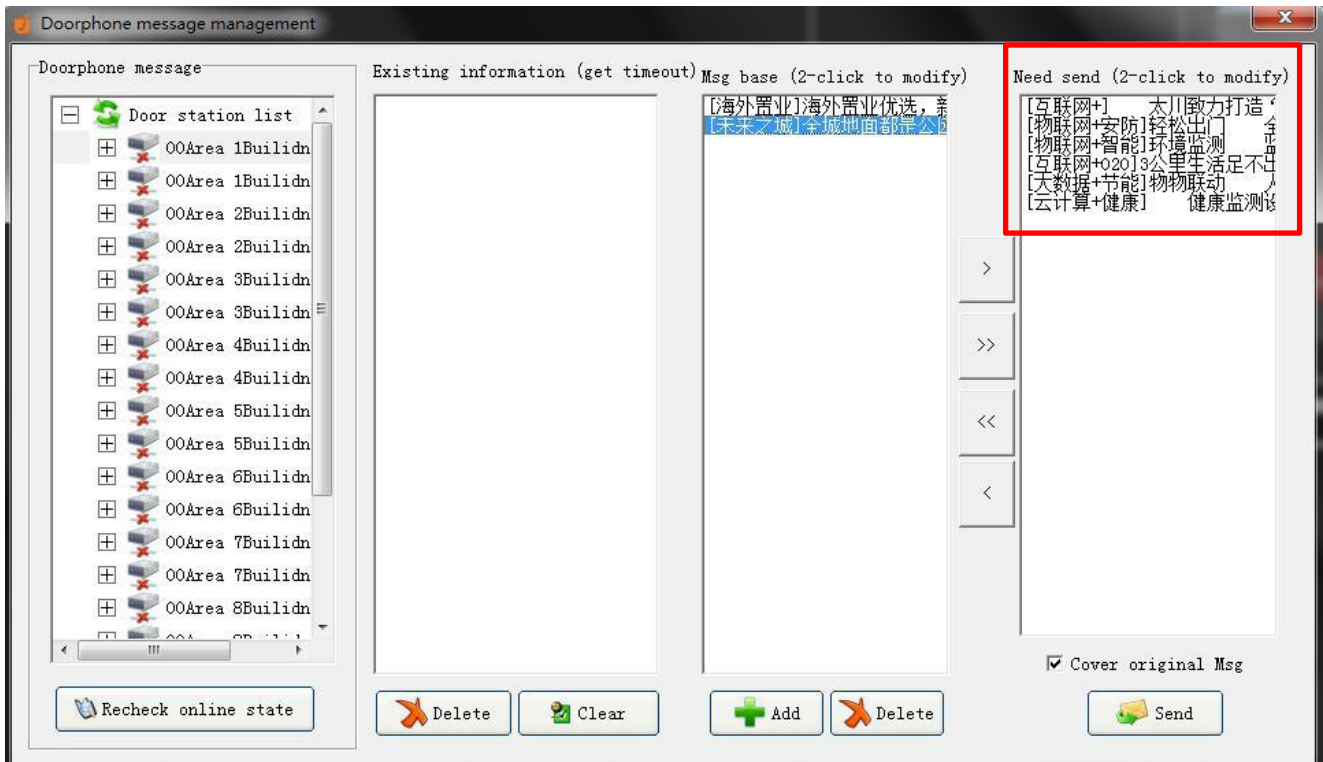
1.7 Message publish

Message to outdoor station, it only support 7 inch and 10 inch outdoor device.

A. text information publish: click the management of outdoor, select the door message publish.



choose the device needed to publish the information

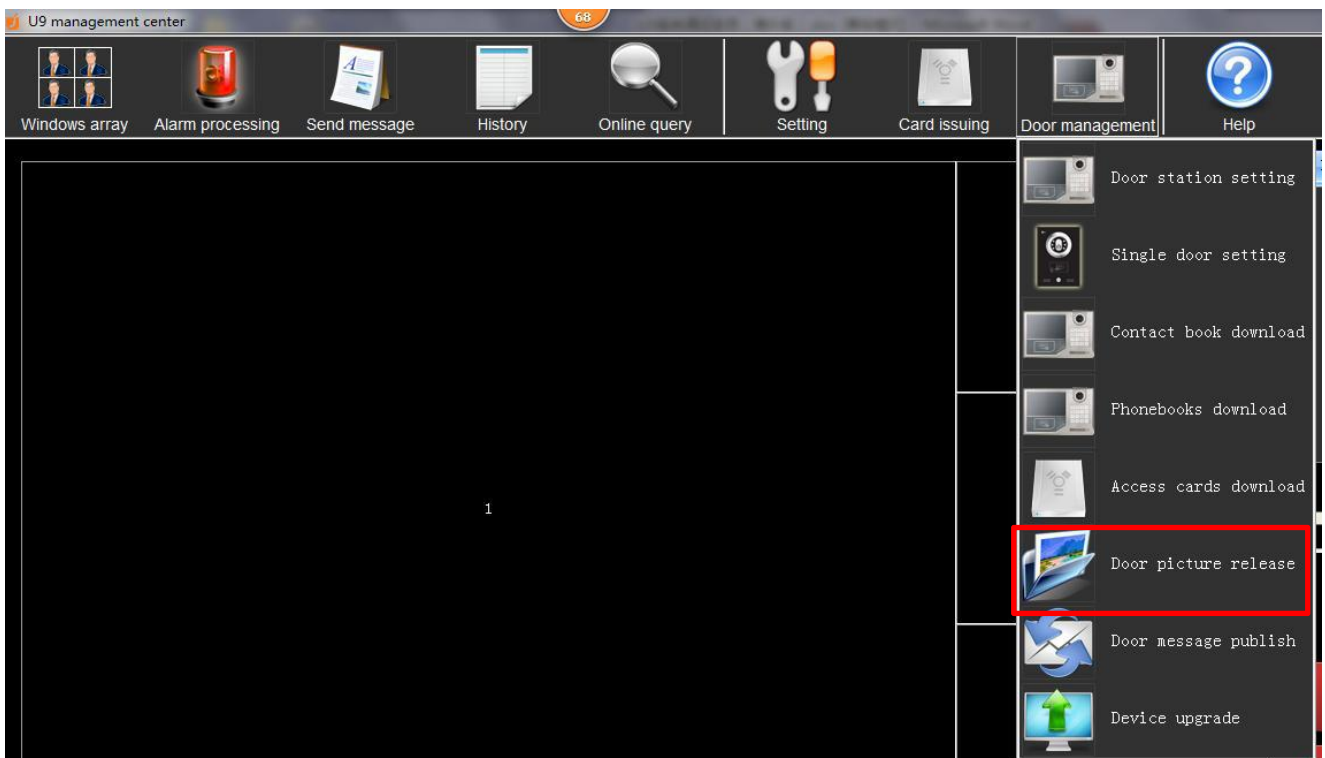


Add a message, and put it to the Sending list, and press send button to send it.

Double click the message edit zone or the existed message to edit it

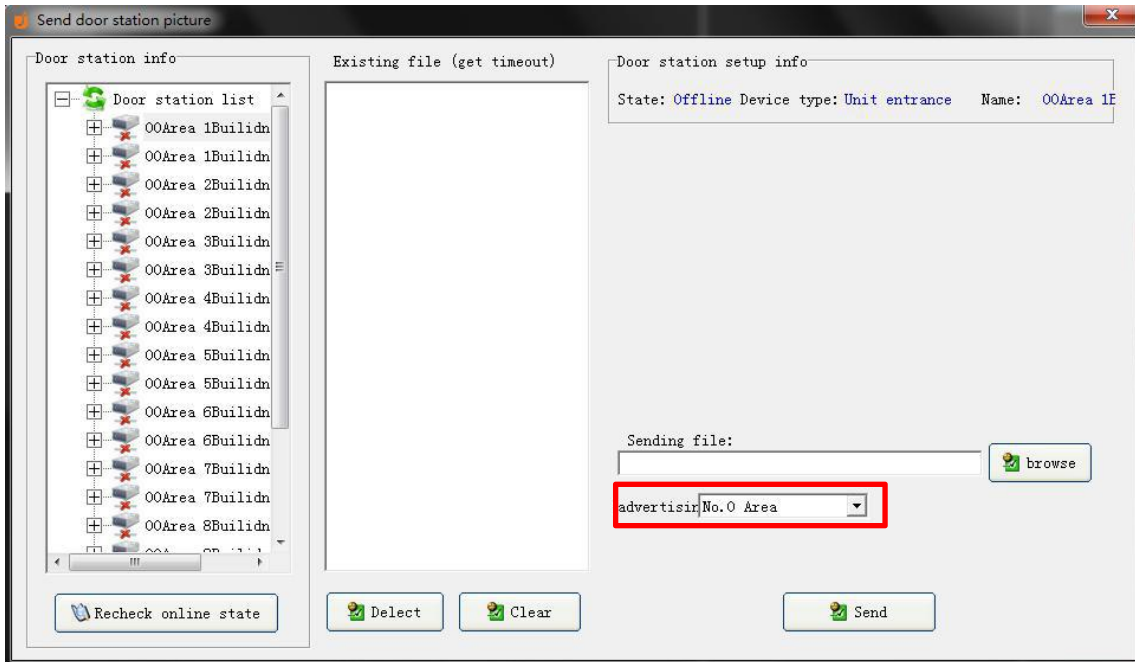


B. Multimedia information publish: click the management of outdoor, select the outdoor device picture release.

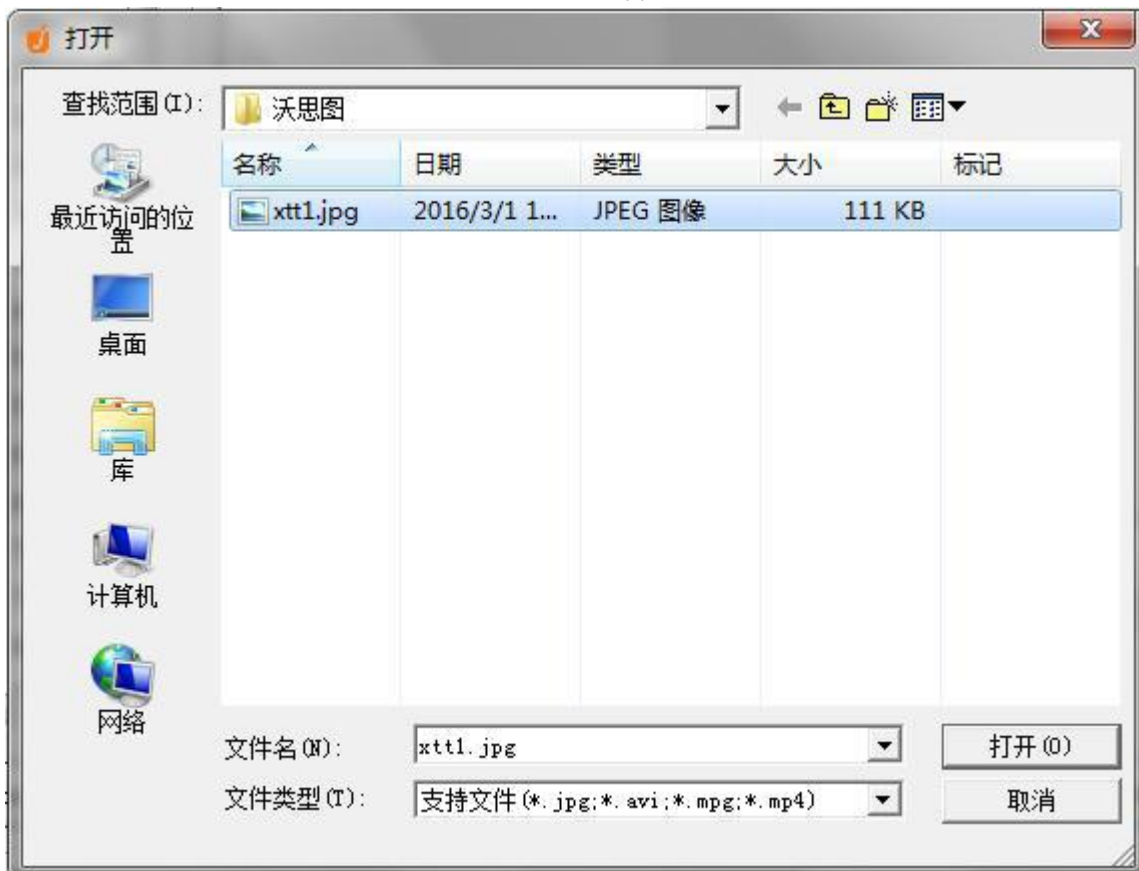


choose the device need to publish the information

or choose the outdoor unit under the same zone (send 1 to multi)



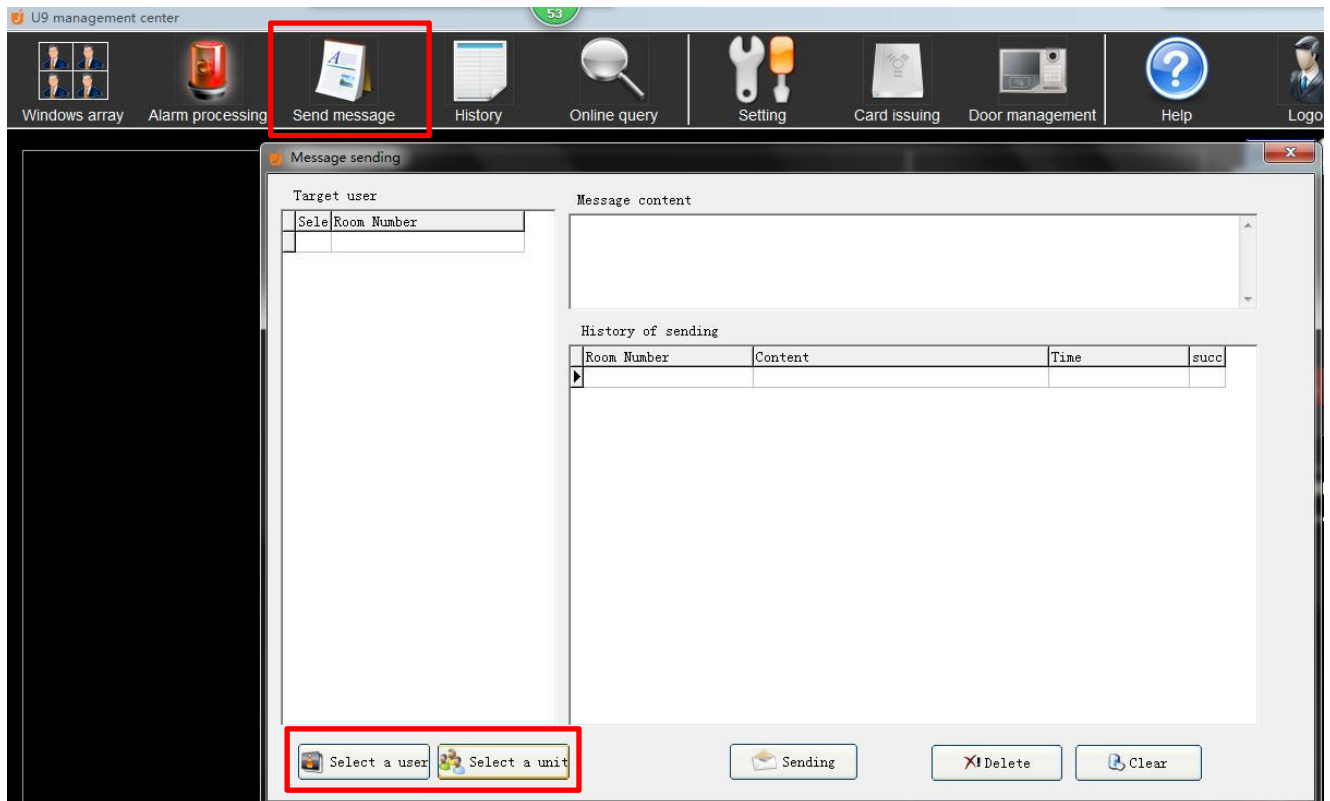
Press the Browse button to choose the media file, it support JPG, MP4, AVI, MPG.



After select the media file, press the Send button to send the Photo or Video to the outdoor device.

C. Message to indoor monitor

Enter the send message menu, and choose to send to single or whole unit users



choose the unit and double click



Edit the Message, and select the target users need to be send message.

Also have the history of sending list and the feedback of it's result

Message sending

Target user

Sele	Room Number
<input checked="" type="checkbox"/>	0Area 1Building 1unit 5Flo
<input checked="" type="checkbox"/>	0Area 1Building 1unit 5Flo
<input checked="" type="checkbox"/>	0Area 1Building 1unit 5Flo
<input checked="" type="checkbox"/>	0Area 1Building 1unit 6Flo
<input checked="" type="checkbox"/>	0Area 1Building 1unit 6Flo
<input checked="" type="checkbox"/>	0Area 1Building 1unit 6Flo
<input checked="" type="checkbox"/>	0Area 1Building 1unit 6Flo
<input checked="" type="checkbox"/>	0Area 1Building 1unit 6Flo
<input checked="" type="checkbox"/>	0Area 1Building 1unit 7Flo
<input checked="" type="checkbox"/>	0Area 1Building 1unit 7Flo
<input checked="" type="checkbox"/>	0Area 1Building 1unit 7Flo
<input checked="" type="checkbox"/>	0Area 1Building 1unit 7Flo
<input checked="" type="checkbox"/>	0Area 1Building 1unit 7Flo
<input checked="" type="checkbox"/>	0Area 1Building 1unit 8Flo
<input checked="" type="checkbox"/>	0Area 1Building 1unit 8Flo
<input checked="" type="checkbox"/>	0Area 1Building 1unit 8Flo
<input checked="" type="checkbox"/>	0Area 1Building 1unit 8Flo
<input checked="" type="checkbox"/>	0Area 1Building 1unit 8Flo
<input checked="" type="checkbox"/>	0Area 1Building 1unit 9Flo
<input checked="" type="checkbox"/>	0Area 1Building 1unit 9Flo
<input checked="" type="checkbox"/>	0Area 1Building 1unit 9Flo
<input checked="" type="checkbox"/>	0Area 1Building 1unit 9Flo
<input checked="" type="checkbox"/>	0Area 1Building 1unit 9Flo
<input checked="" type="checkbox"/>	0Area 1Building 1unit 10Fl
<input checked="" type="checkbox"/>	0Area 1Building 1unit 10Fl
<input checked="" type="checkbox"/>	0Area 1Building 1unit 10Fl
<input checked="" type="checkbox"/>	0Area 1Building 1unit 10Fl

Message content

hello

History of sending

Room Number	Content	Time	succ
0Area 1Building 1unit 6hello		2016-03-02 17:00:4	No
0Area 1Building 1unit 7hello		2016-03-02 17:00:4	No
0Area 1Building 1unit 7hello		2016-03-02 17:00:4	No
0Area 1Building 1unit 7hello		2016-03-02 17:00:4	No
0Area 1Building 1unit 7hello		2016-03-02 17:00:4	No
0Area 1Building 1unit 7hello		2016-03-02 17:00:4	No
0Area 1Building 1unit 8hello		2016-03-02 17:00:4	No
0Area 1Building 1unit 8hello		2016-03-02 17:00:4	No
0Area 1Building 1unit 8hello		2016-03-02 17:00:4	No
0Area 1Building 1unit 8hello		2016-03-02 17:00:4	No
0Area 1Building 1unit 8hello		2016-03-02 17:00:4	No
0Area 1Building 1unit 9hello		2016-03-02 17:00:4	No
0Area 1Building 1unit 9hello		2016-03-02 17:00:4	No
0Area 1Building 1unit 9hello		2016-03-02 17:00:4	No
0Area 1Building 1unit 9hello		2016-03-02 17:00:4	No
0Area 1Building 1unit 9hello		2016-03-02 17:00:4	No
0Area 1Building 1unit 1hello		2016-03-02 17:00:4	No
0Area 1Building 1unit 1hello		2016-03-02 17:00:4	No
0Area 1Building 1unit 1hello		2016-03-02 17:00:4	No
0Area 1Building 1unit 1hello		2016-03-02 17:00:4	No

Select a user

Select a unit

Sending

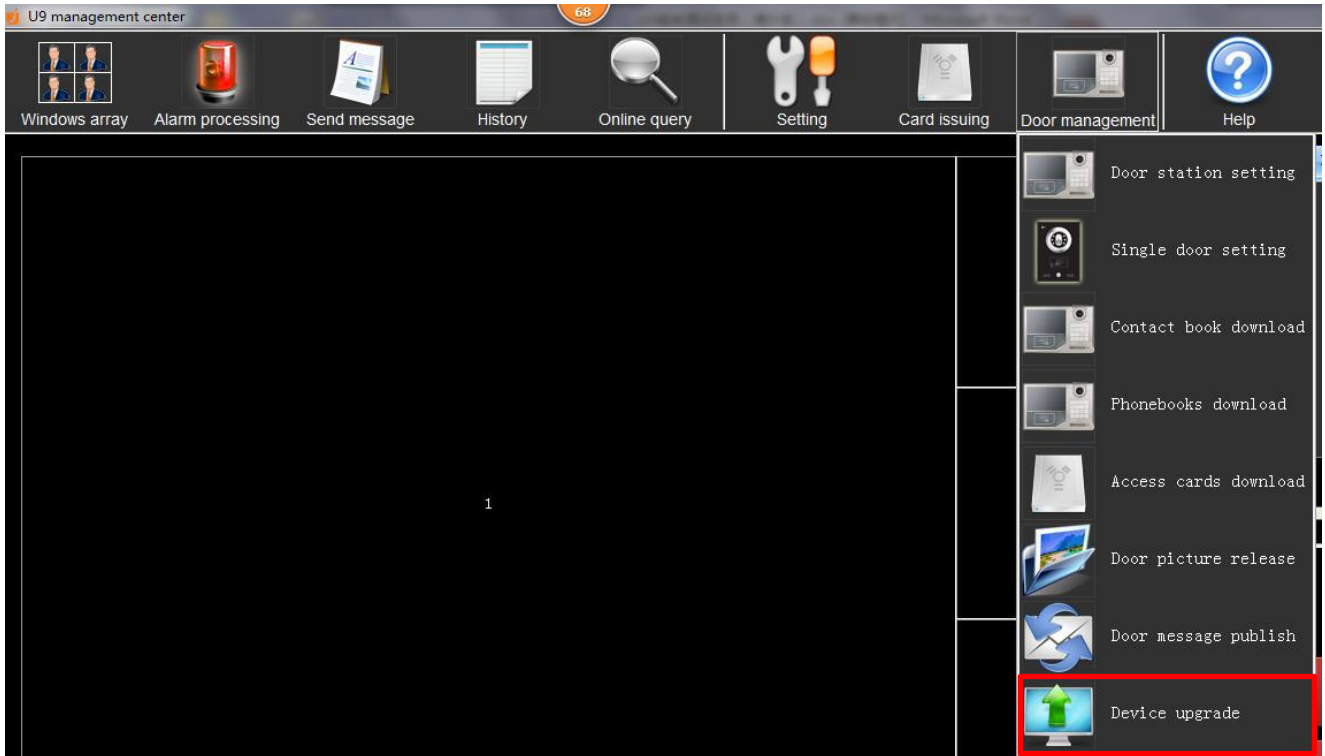
Delete

Clear

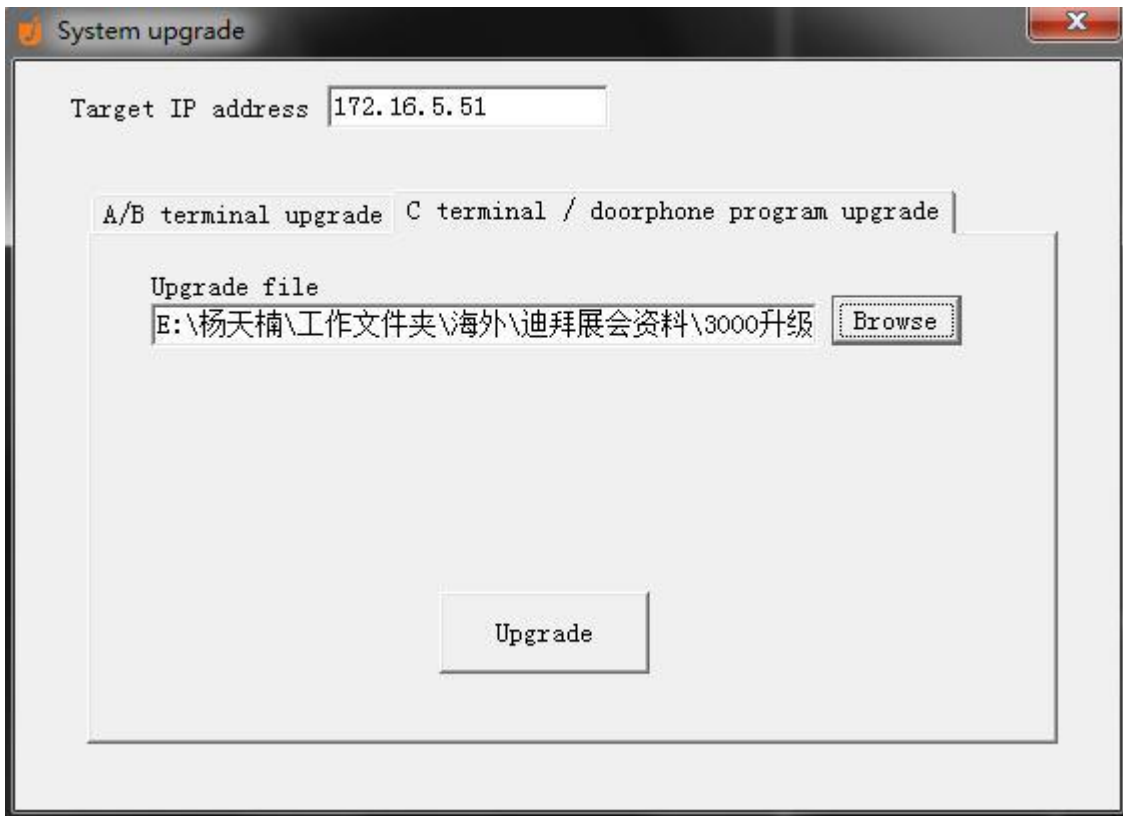
1.8 Device version update through the management center

Outdoor device, indoor monitor firmware upgrade.

click the management of outdoor, select the Device upgrade.



input the IP address of the device need to upgrade

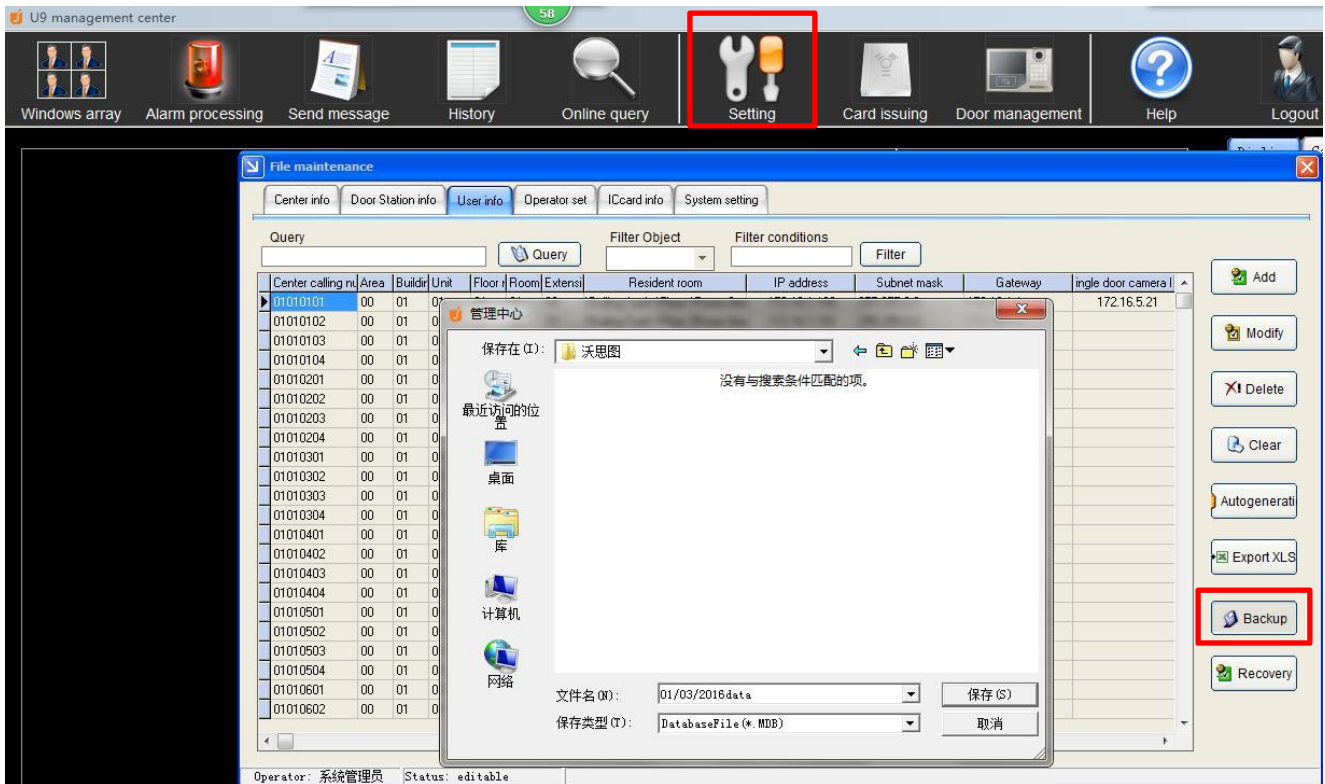


Click the Browse to select the firmware file, and click Upgrade to update the target device remotely.

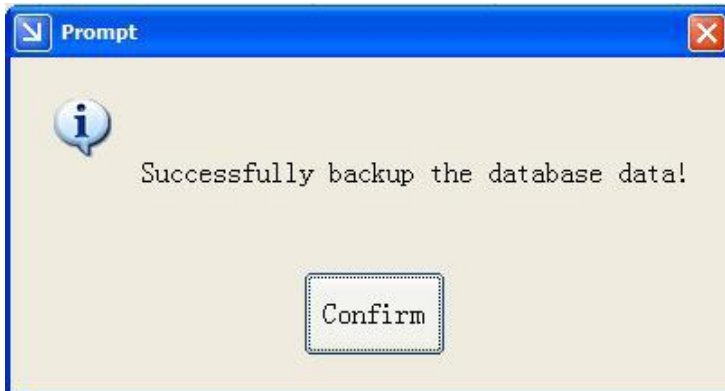
1.9 Data management and backup

A. Data backup

Enter the management center software, click setting, and select the Backup menu.

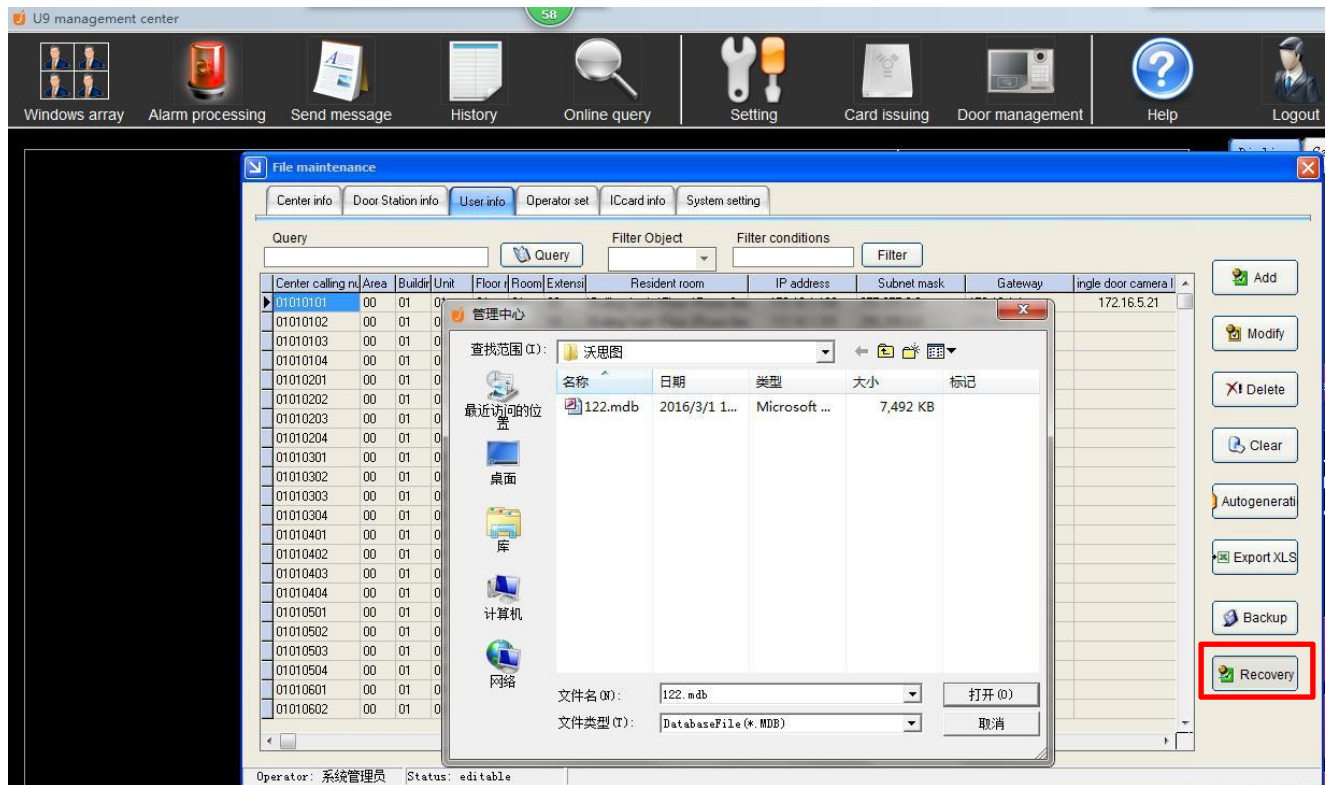


name the backup file, and choose the backup disk location

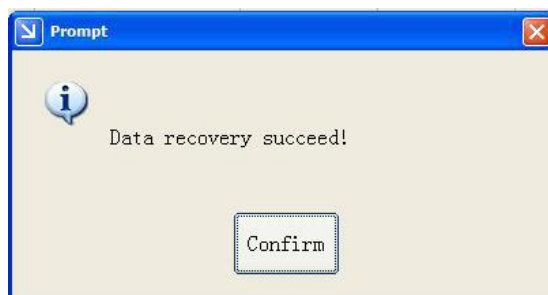
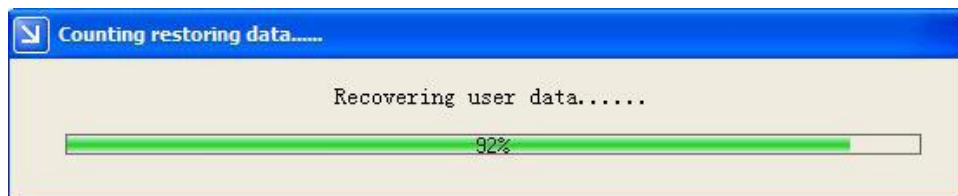
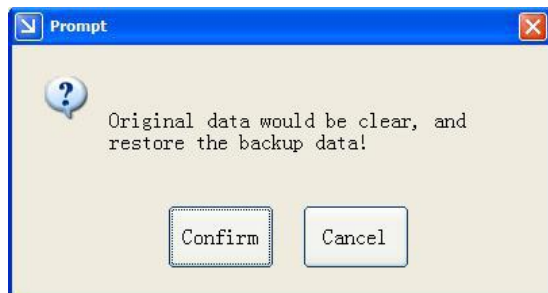


B. Data recovery

Enter the management center software, click setting, and select the Recovery menu.



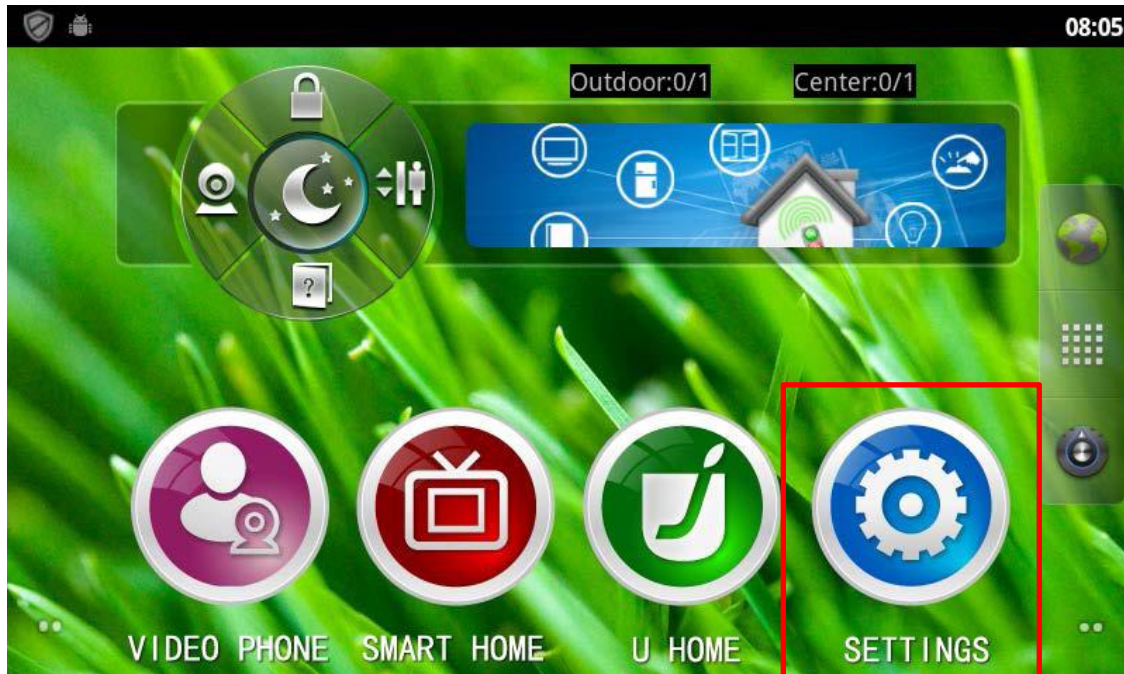
select the backup file, and confirm for the Recovery.



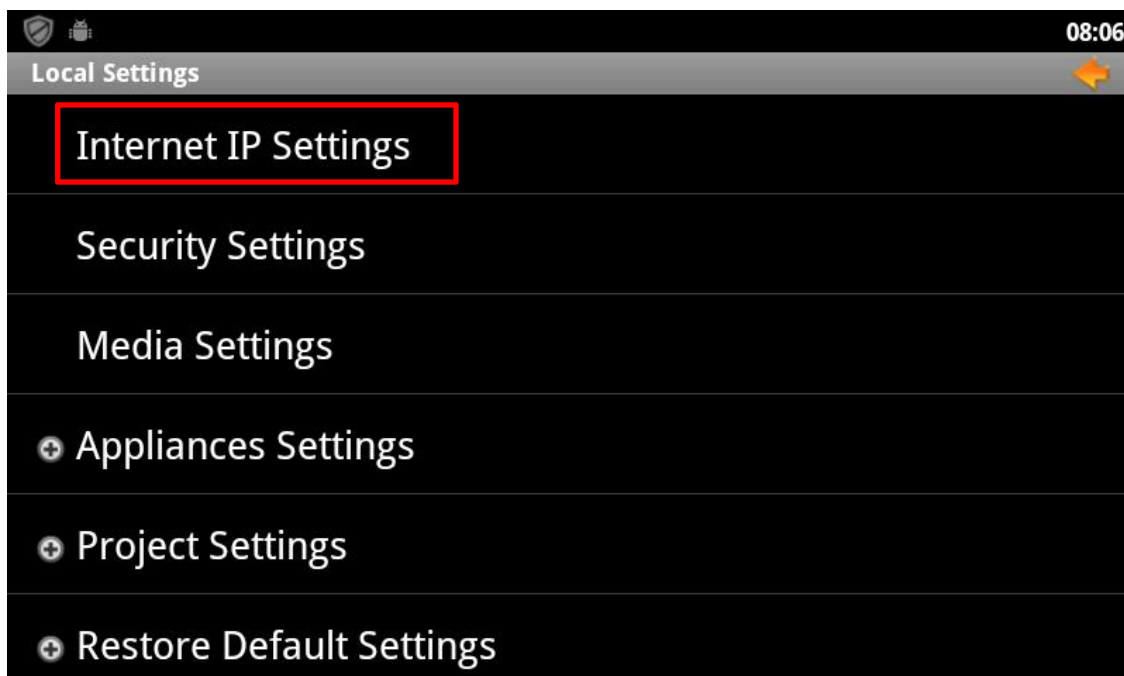
2. Indoor Monitor Configure

2.1 U9 Android system touch screen

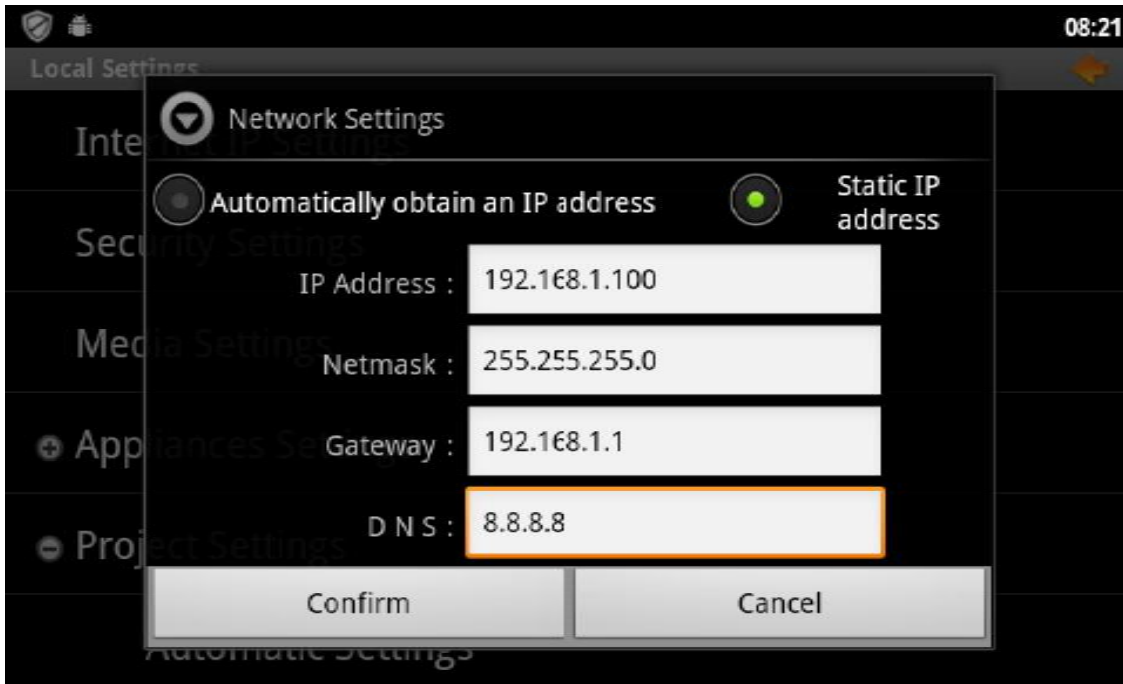
Touch “setting” to go to setting menu



Touch “internet IP setting” (This IP is use for the indoor monitor communicate with internet)

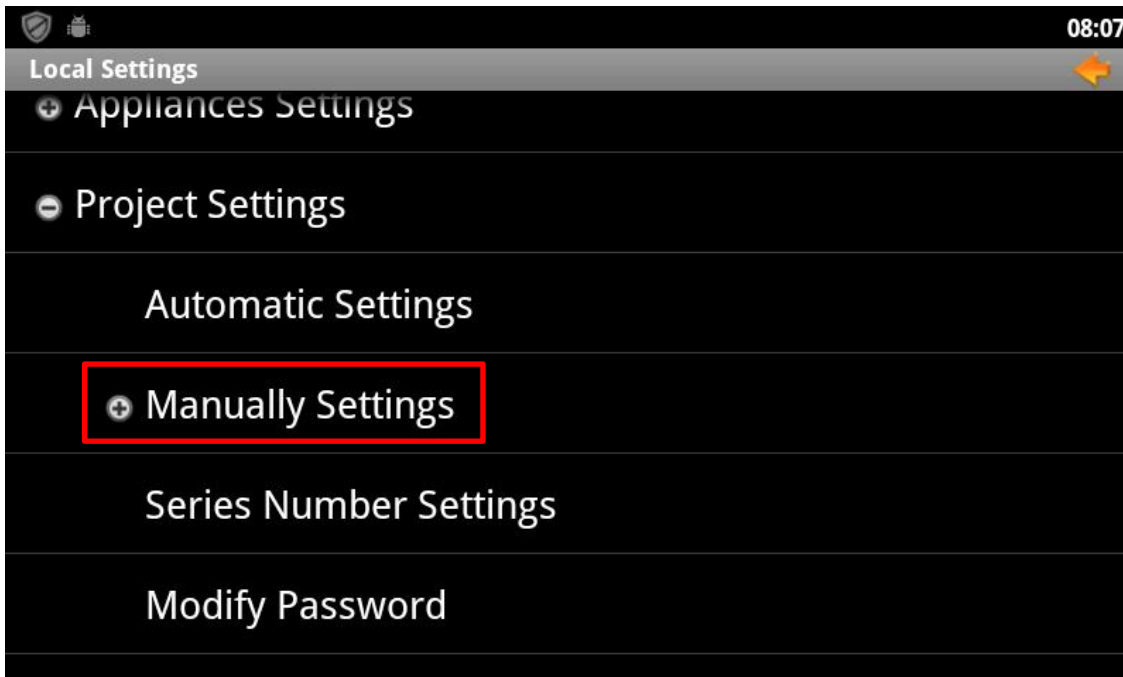


Fill the IP address here and confirm

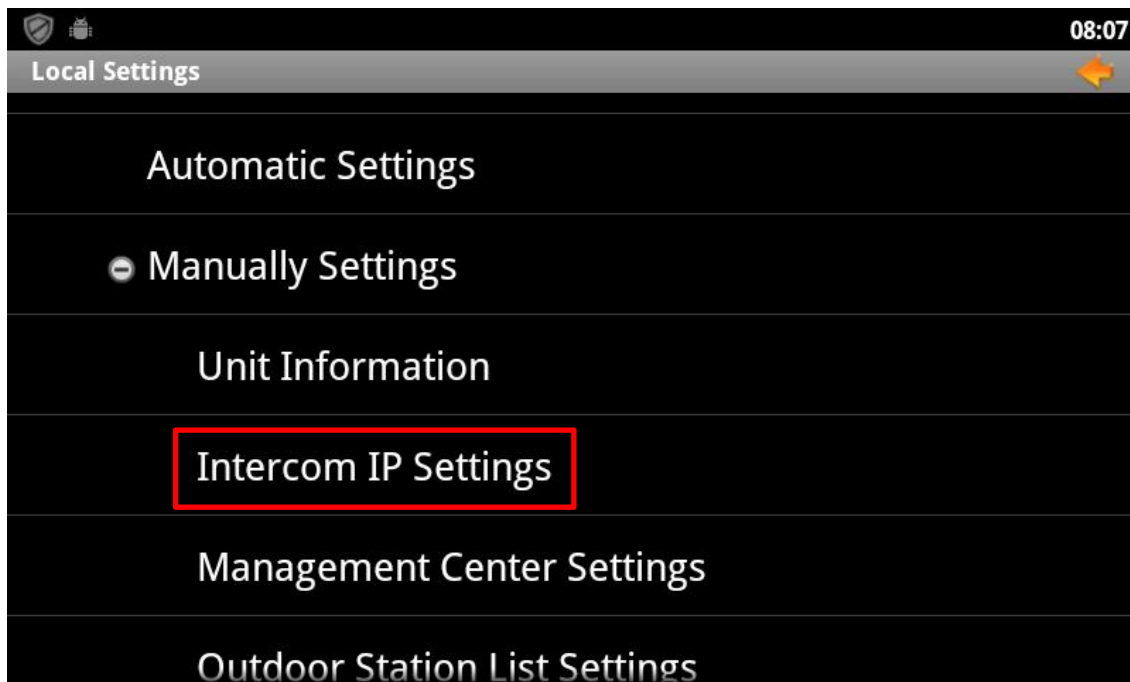


Enter the project setting and choose the “manually setting”

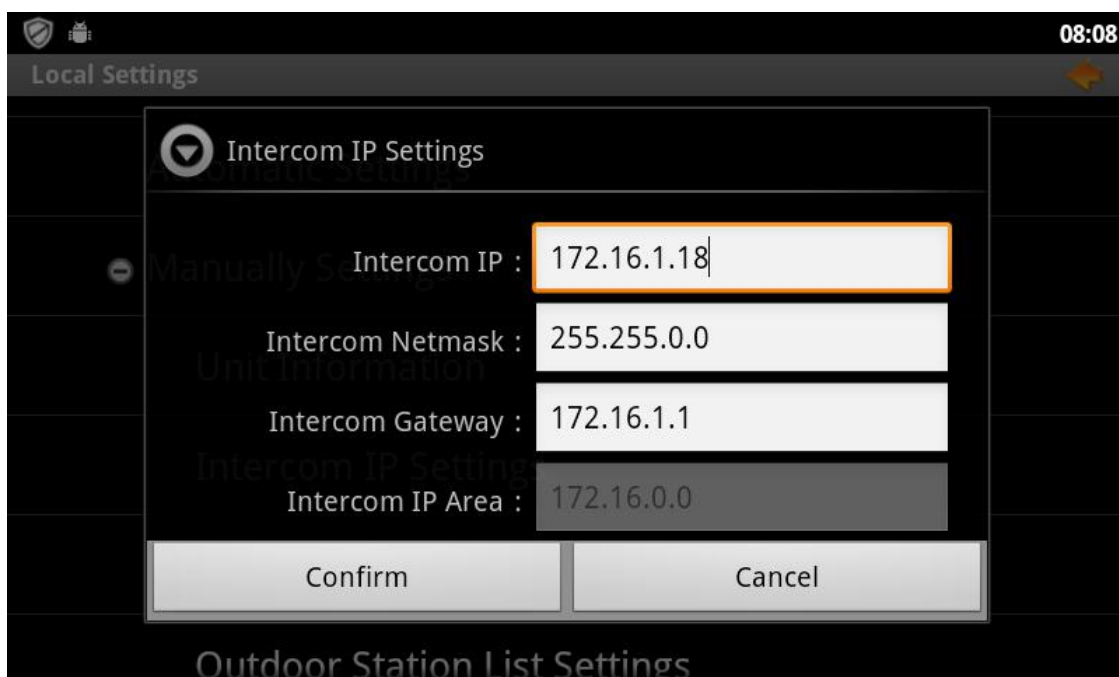
Project Setting default passwords:123456



Touch intercom IP setting to configure the intercom IP”

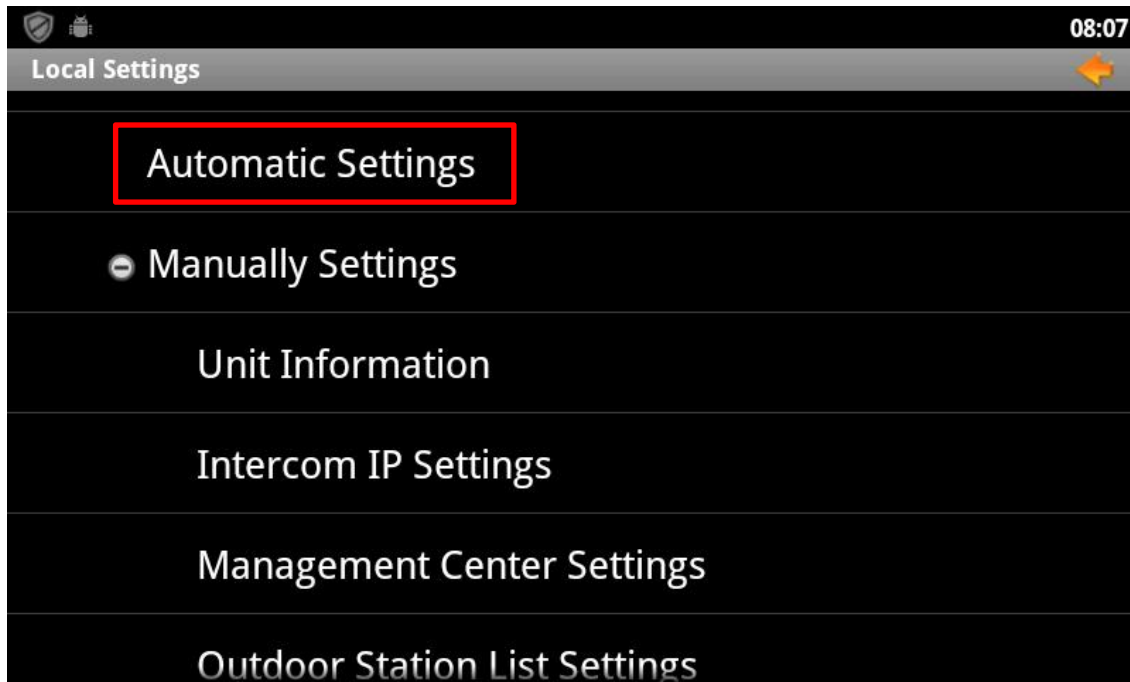


Configure intercom IP, make sure the indoor monitor, door station, management center in same network segment.

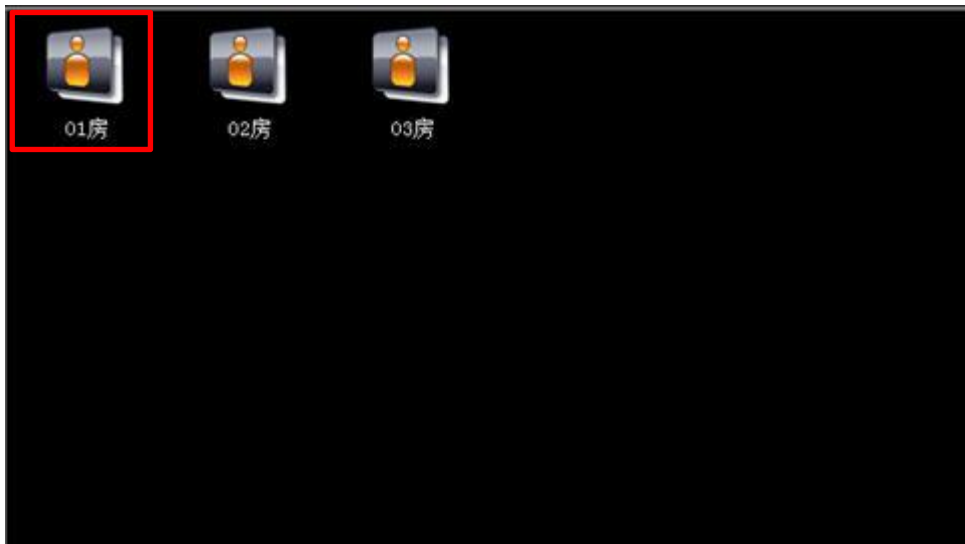


enter the “automatic setting” to select the corresponding unit number and room number.

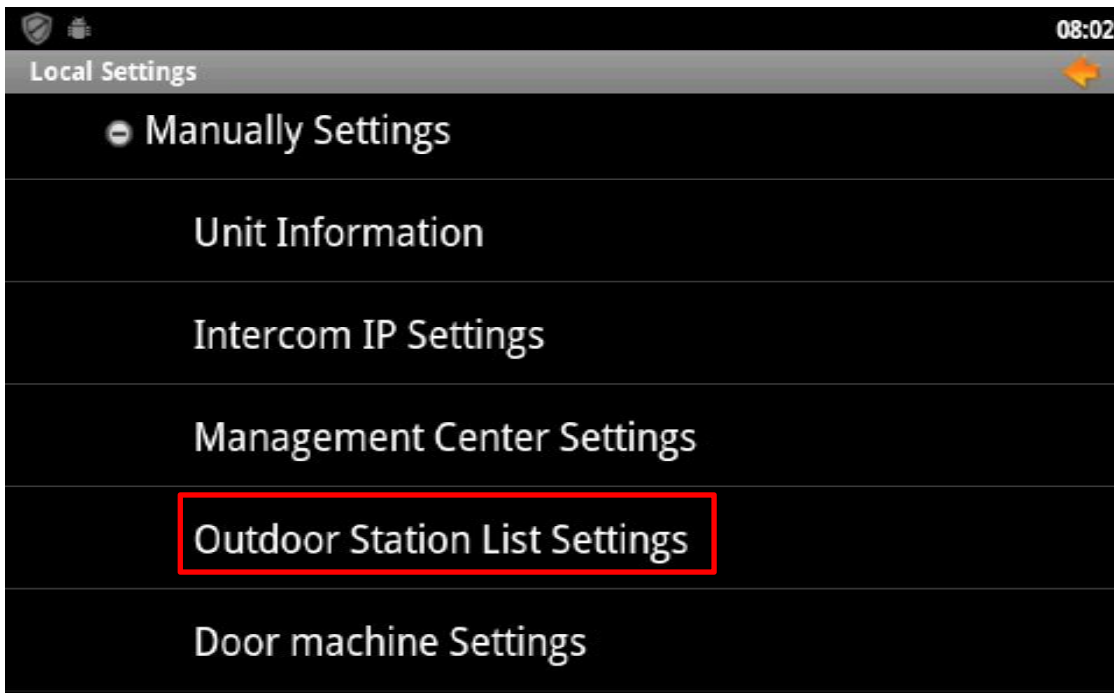
It will obtain the configure data from the management center, and display the Room No. Floor No. Unit No. Building No. Area No. on the screen.



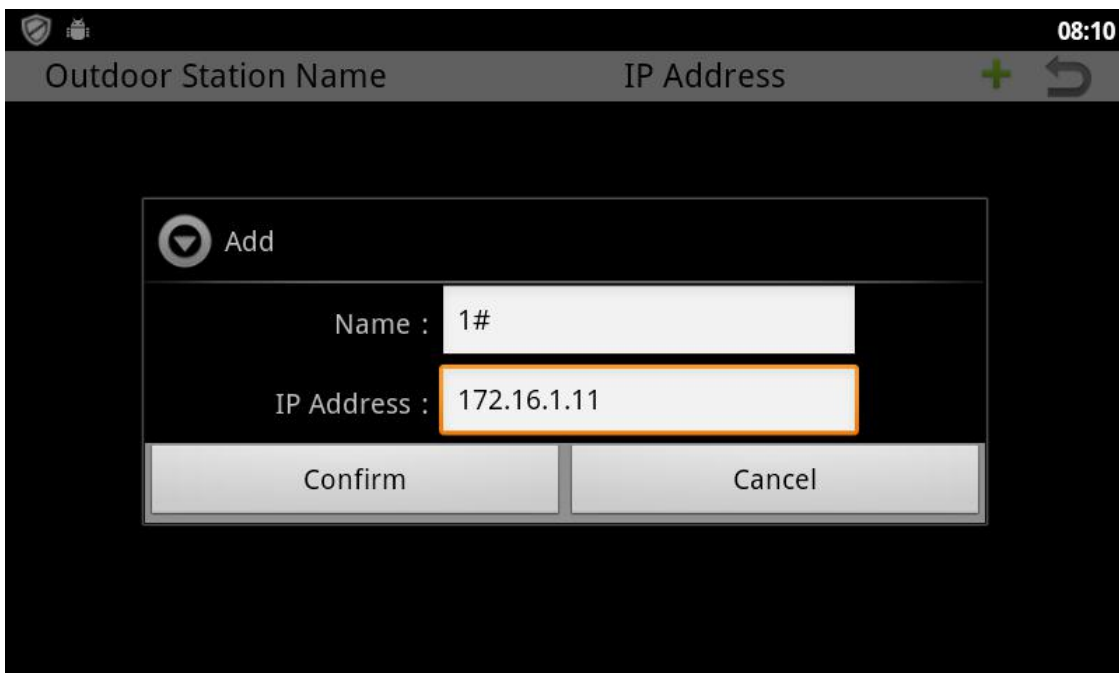
Choose the corresponding room number to finish the configure.



Or Manually Choose this item Outdoor station list settings

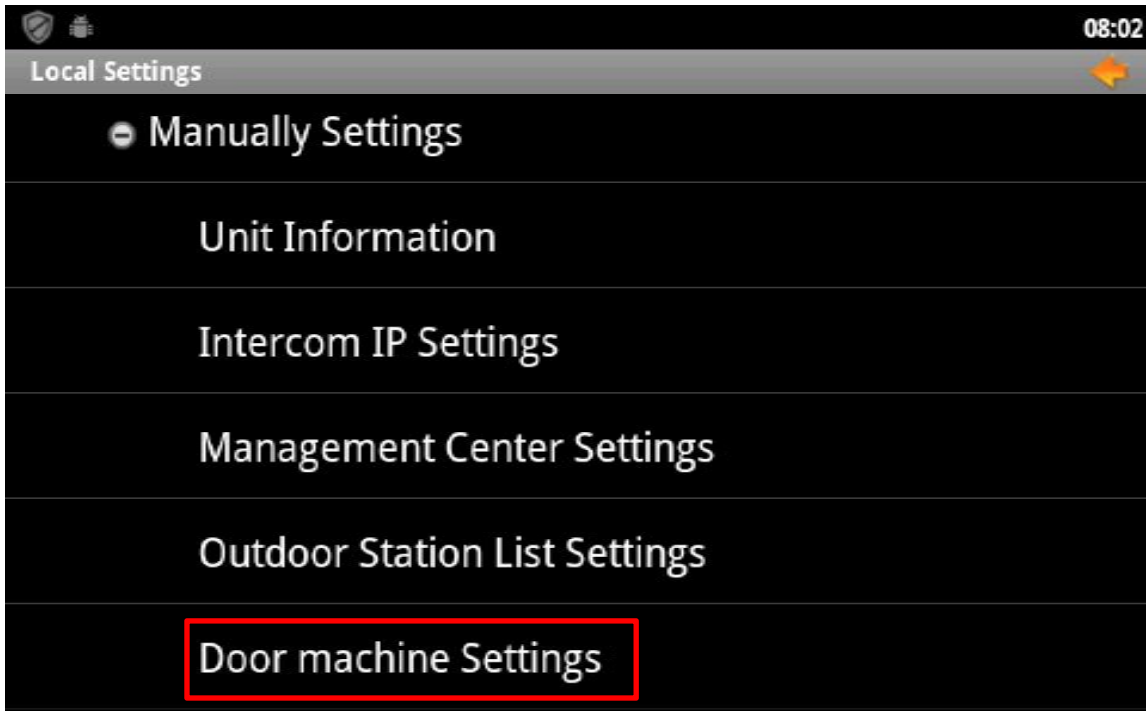


Touch “+” to add door station. And get the “add” menu
Enter door station info and IP in this menu. And confirm.

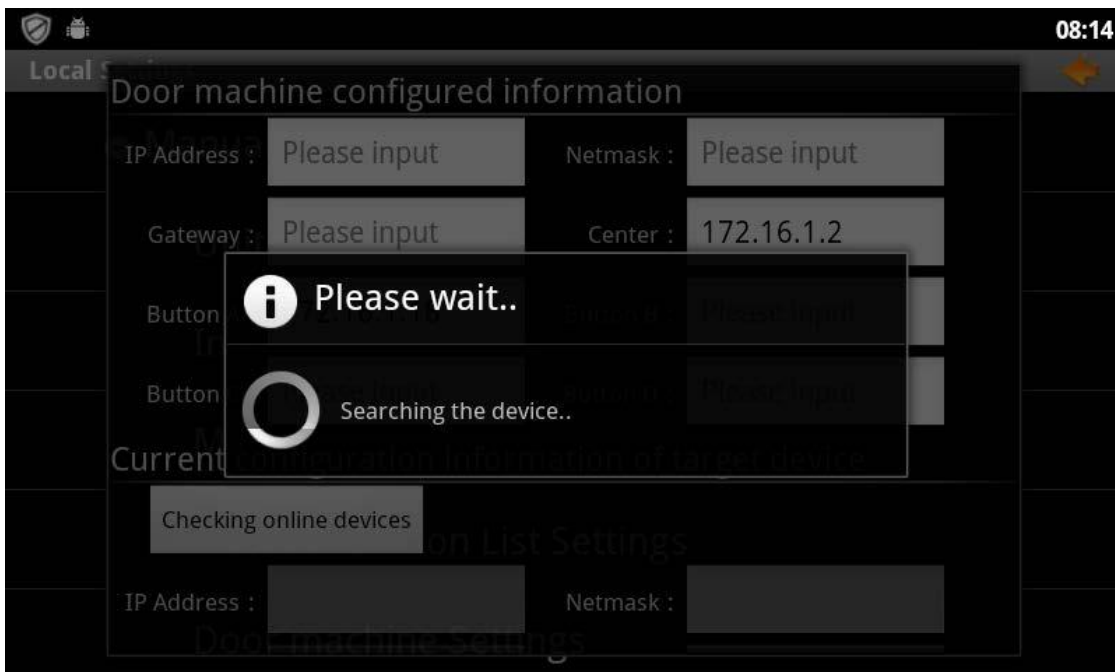


Add single outdoor unit to indoor monitor:

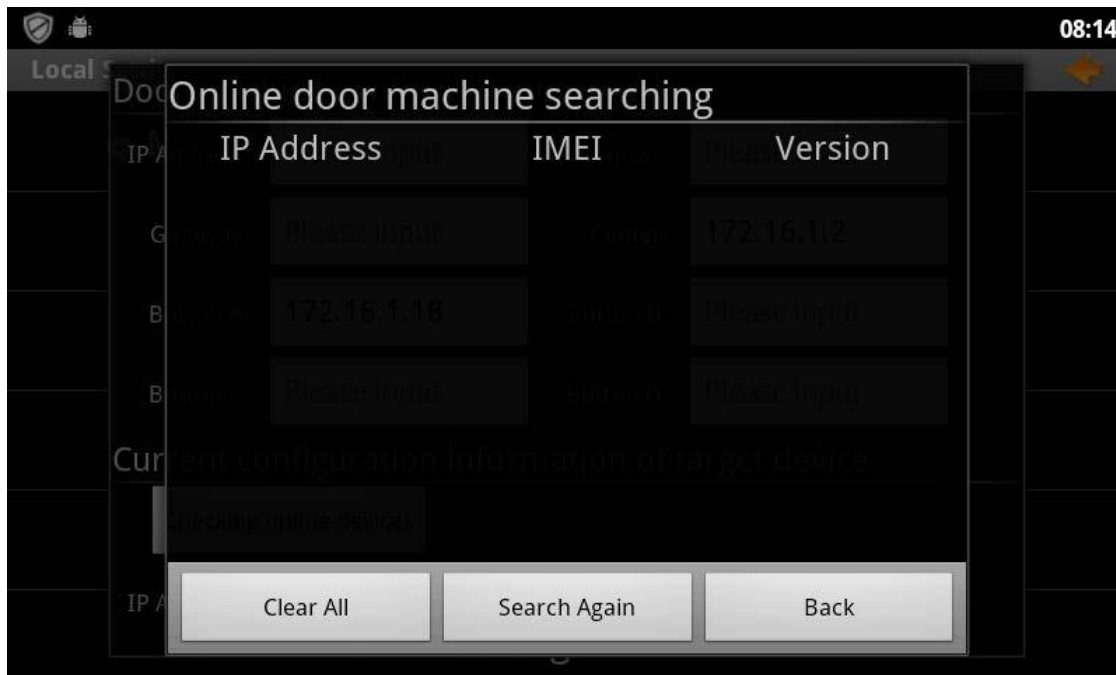
Touch this item enter single outdoor unit setting and get bellow menu



The system would search the door unit which are in same LAN with indoor monitor



Touch the items which you have option, and go to next step



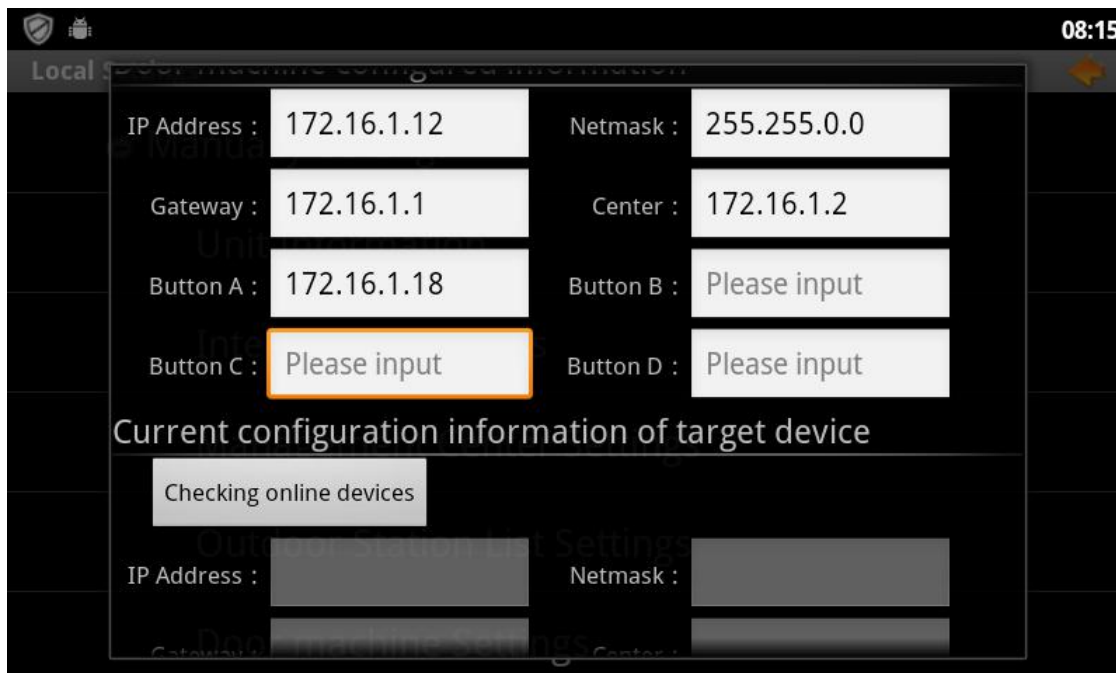
IP Address	IMEI	Version
Please input	Please input	172.16.1.2
172.16.1.18	Please input	Please input
Please input	Please input	Please input

Current configuration information of target device

Checking online devices

Clear All Search Again Back

Configure the outdoor unit IP, make sure the outdoor unit IP is in the same segment with IP address. When finished, slide up to get the below menu



IP Address : 172.16.1.12 Netmask : 255.255.0.0

Gateway : 172.16.1.1 Center : 172.16.1.2

Button A : 172.16.1.18 Button B : Please input

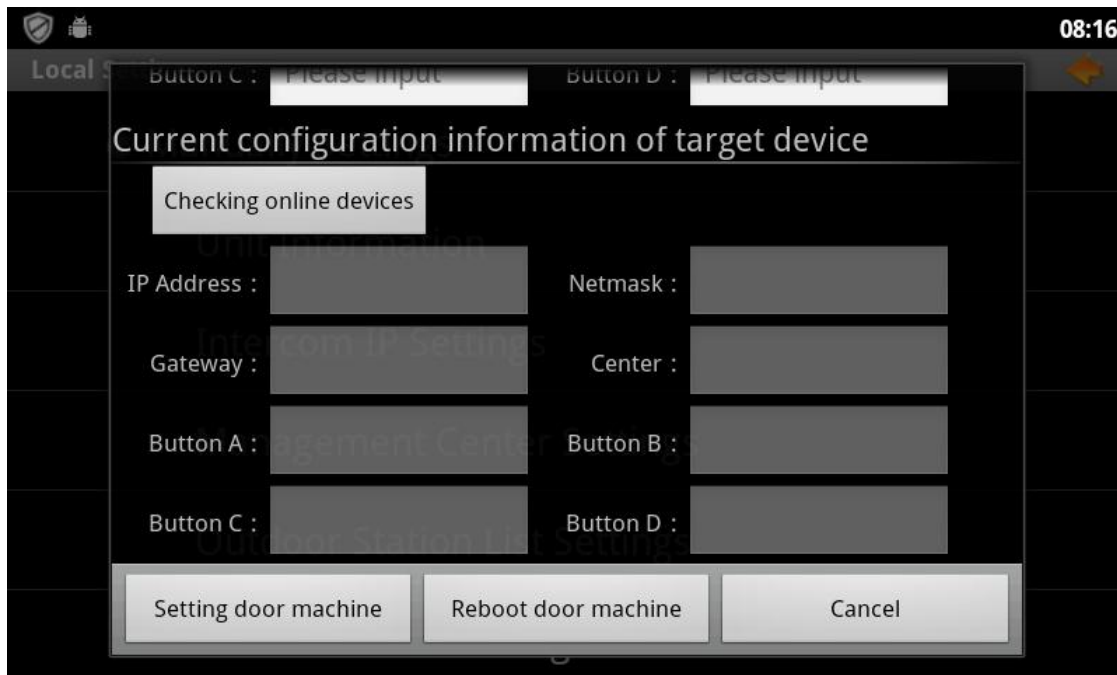
Button C : Please input Button D : Please input

Current configuration information of target device

Checking online devices

IP Address : Netmask :

Touch this menu to finish intercom IP setting



08:16

Local Settings

Button C : Please input Button D : Please input

Current configuration information of target device

Checking online devices

IP Address :		Netmask :	
Gateway :		Center :	
Button A :		Button B :	
Button C :		Button D :	

Setting door machine Reboot door machine Cancel

Multi indoor monitor configuration (Extension set configuration)

Touch this item to add extension set and get bellow menu



08:18

Local Settings

Door machine Settings

NetBox Setting

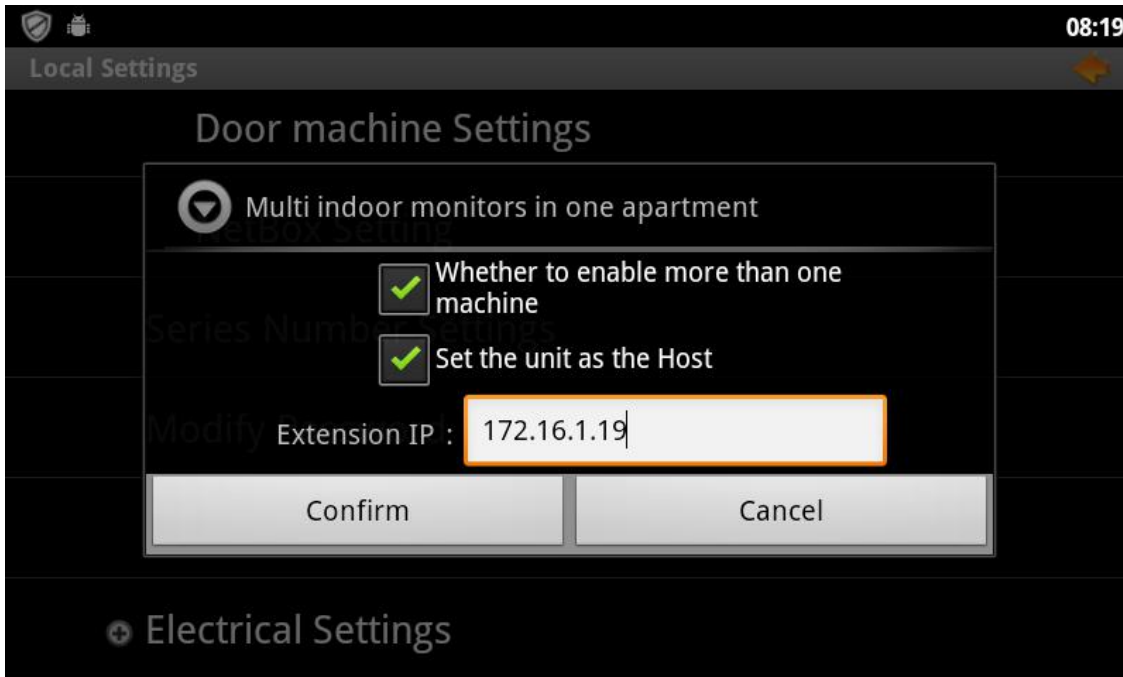
Series Number Settings

Modify Password

Multi indoor monitors in one apartment

Electrical Settings

Mark the items according user's need, and fill the extension set IP, then confirm.



08:19

Local Settings

Door machine Settings

Multi indoor monitors in one apartment

☒ Whether to enable more than one machine

☒ Set the unit as the Host

Extension IP : 172.16.1.19

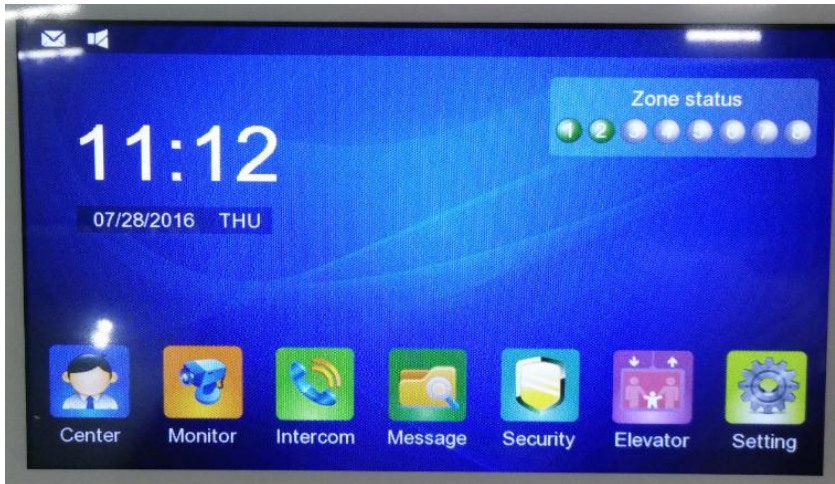
Confirm Cancel

Electrical Settings

2.2 3000 Linux system touch screen

Note: the TC3000 indoor monitor touch screen series, user can directly touch the Screen to operating.

2.2.1 The Main interface as following:



2.2.2 Click the "Setting" button to enter the system menu.

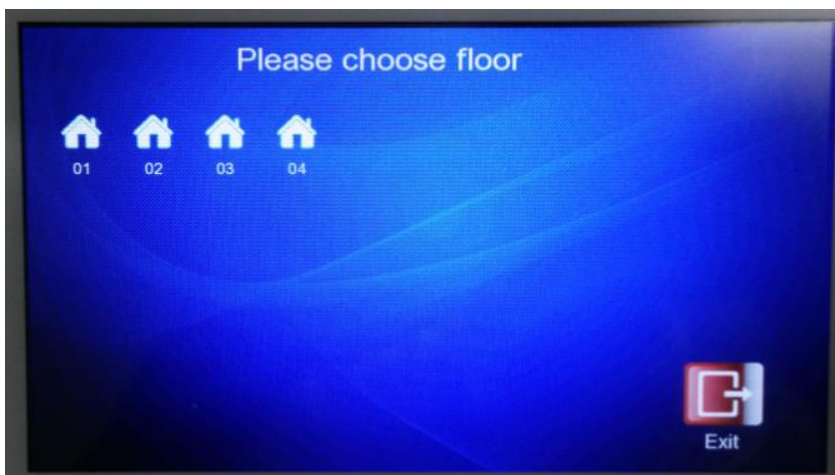
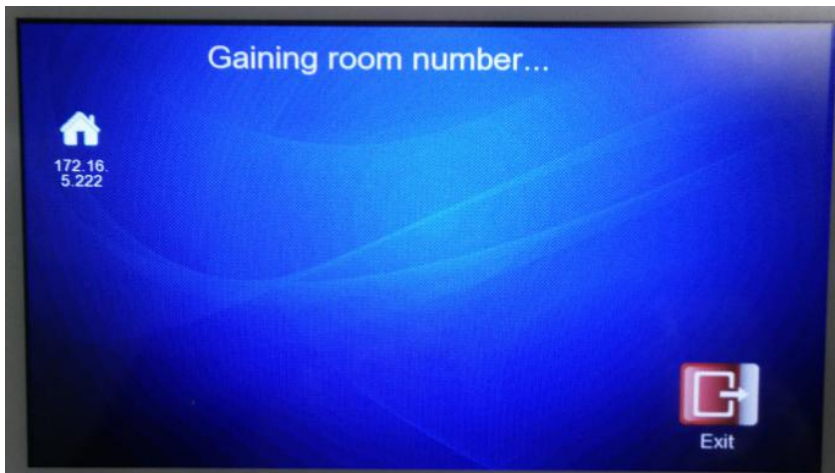
The default password is: 300020150930 or 123



Click Intercom parameter to configure the IP Address and Room Number.



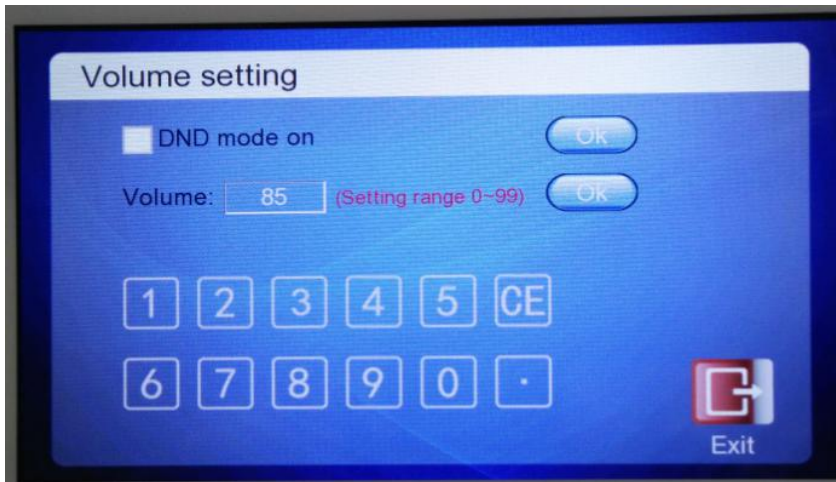
Click the “Auto setting” to gain the data from Management Center, and choose the user info according prompt step by step.



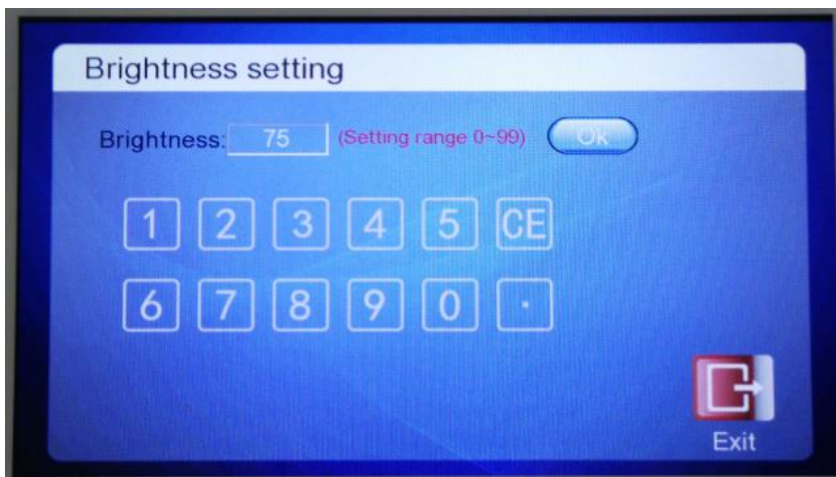
Click the “Device info” button to get the full information of the indoor monitor.



Click the “Volume setting” button to Enable the DND mode and setting the Ring Volume with 0~99 grade.



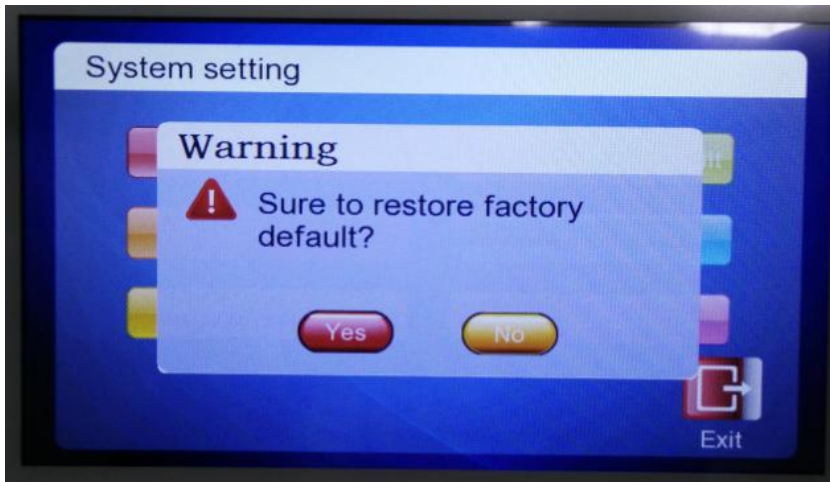
Click the “Brightness setting” button to setting the Ring Volume with 0~99 grade.



Click the “Clock” button to setting the time for the indoor monitor



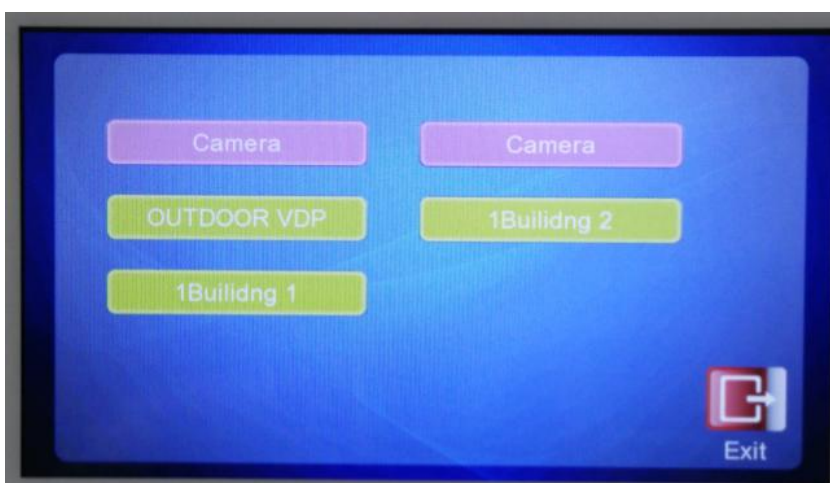
Click the “Restore factory default” button to restore the indoor monitor.



2.2.3 Click the “Center” button from the main interface to call the management center.



2.2.4 Click the “Monitor” button from the main interface to monitor the online Outdoor Panel and the configured IP camera..



2.2.5 Click the “Intercom” button from the main interface to enter the intercom interface.



Click the “Phone book” button for flat to flat call, you can add the list to the phone book of your neighbor.



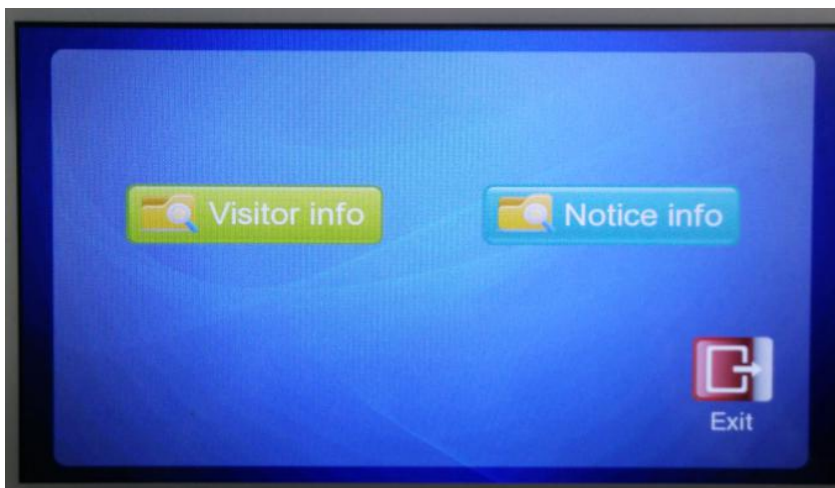
Click the “Record” button to check the record list, you can clear all by click the clear button.



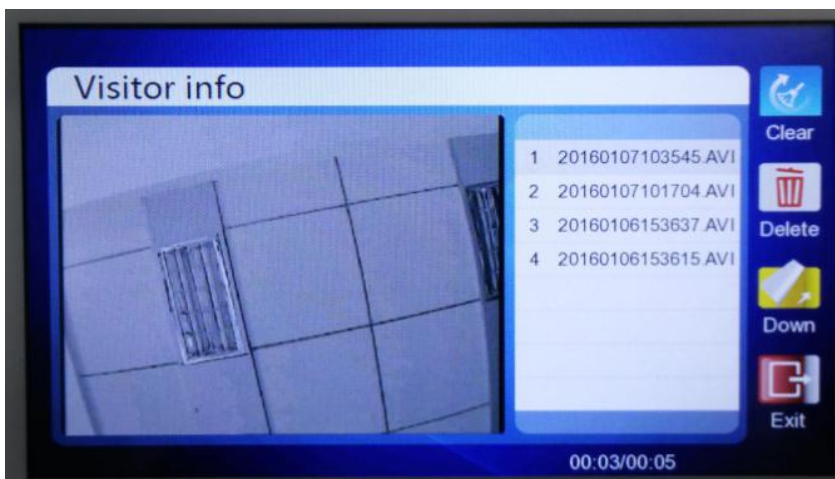
When have the calling from Outdoor panel, the interface as following.



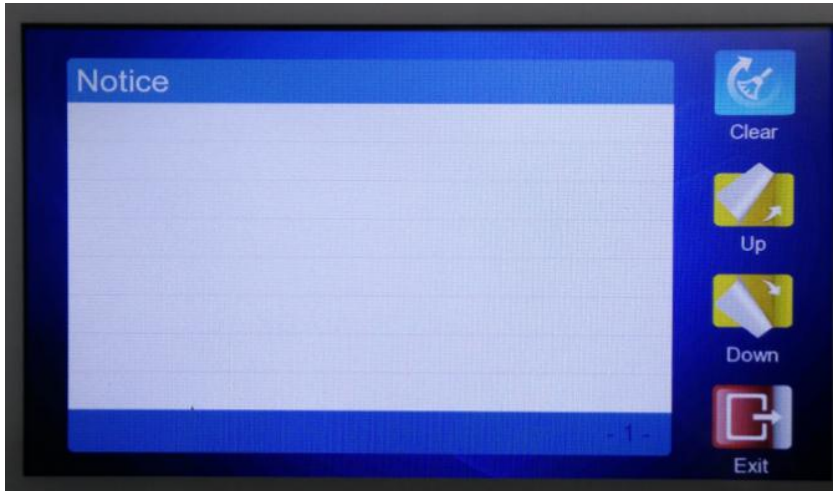
2.2.6 Click the “Message” button from the main interface to check the Visitor info from the outdoor panel, and the Notice info from management center.



Click the “Visitor info” button to check the video record list for the visitors, you can clear all video by click the clear button.



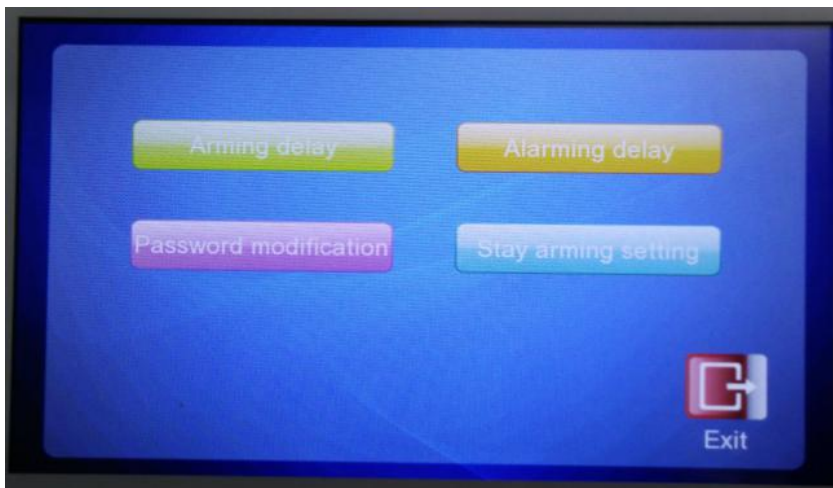
Click the “Notice info” button to check the message list send from the management center, you can clear all list by click the clear button.



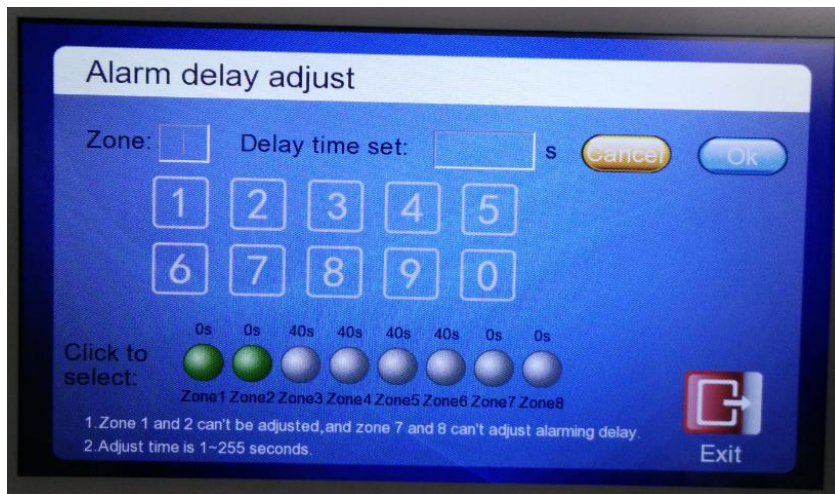
2.2.7 Click the “Security” button from the main interface to enter the security setting interface



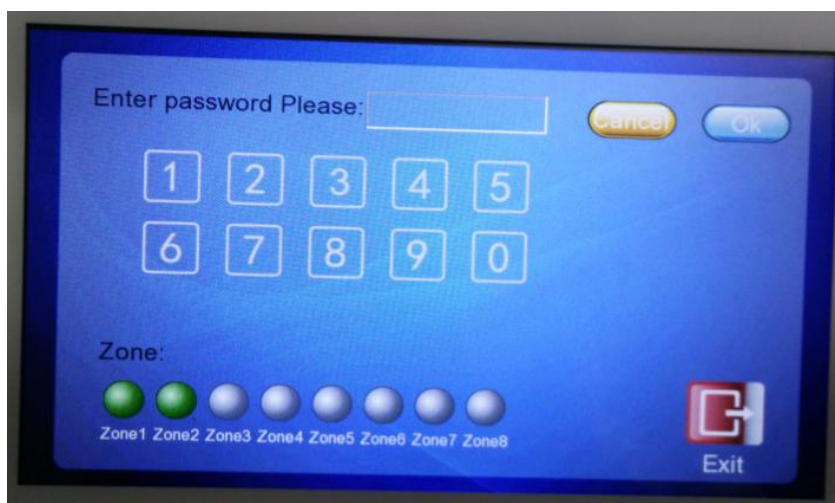
Click the “Setting” button to enter the menu for arming parameter setting.



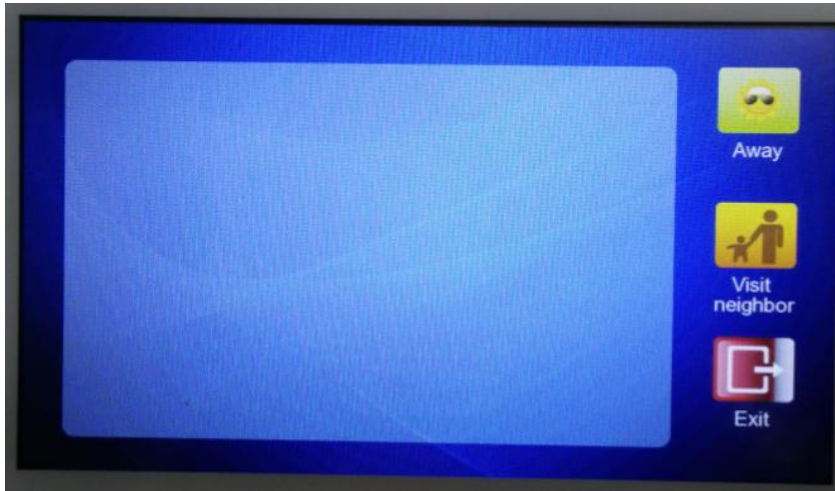
Click the “Arming delay” button to set the delay time for each Zone.



Click the “Password modification” button to reset the disarm password.



2.2.8 Click the “Elevator” button from the main interface to call the Lift from indoor monitor.
With the option to go outside or visit neighbor.



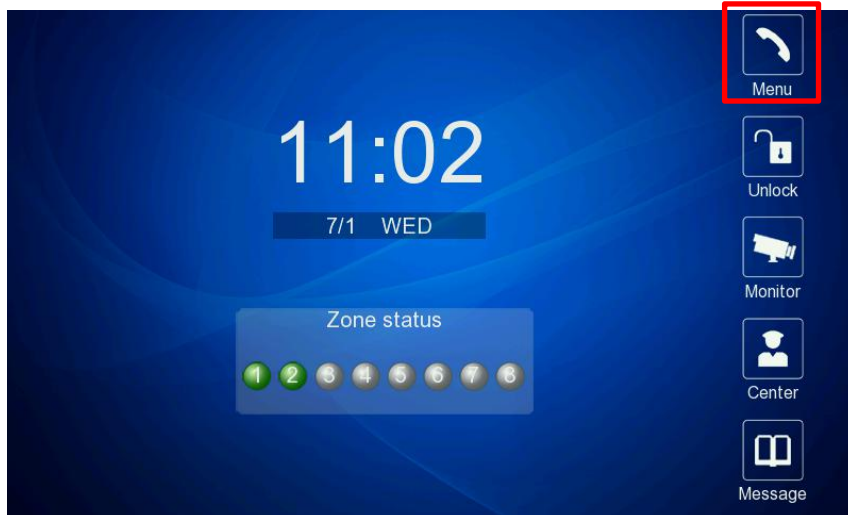
When click any option, the indoor monitor will send the command signal to the outdoor visit panel.
and call the Lift at your floor waiting for you.



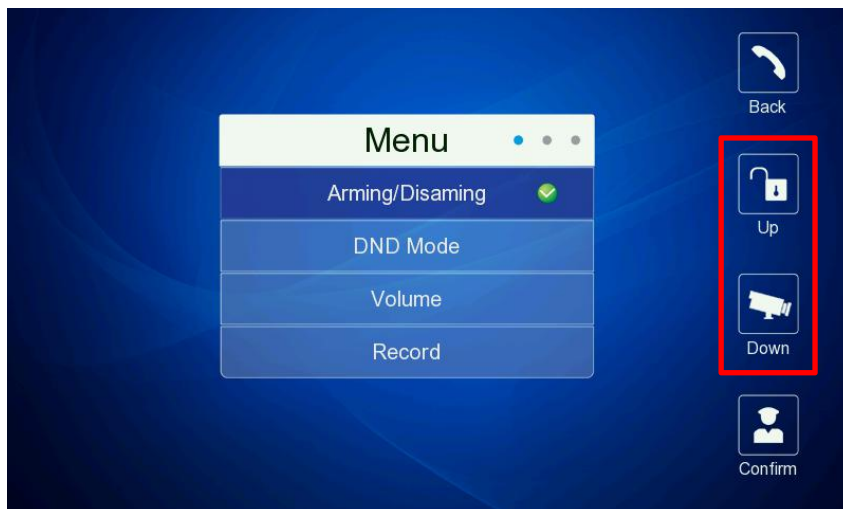
2.3 3000 Linux system non touch screen

Note: the TC3000 indoor monitor Non touch screen series, user should touch the “touch keys” on the device to operating.

Touch Menu Button to enter menu



Touch “up” to upturning the menu; Touch “down” to down turn the menu.



Choose “room num. Setting”



Enter with the engineer password: 123123



Enter engineer password

1 2 3 Confirm Cancel

Choose the user info according prompt step by step.

Choose unit number. & confirm

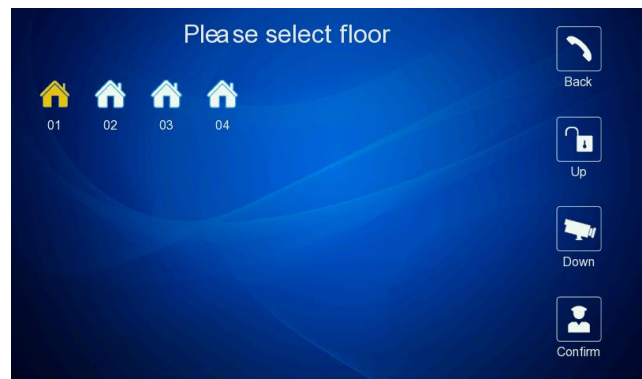


Please choose unit Num.

01 02

Confirm Down Up Back

Choose floor number. & confirm

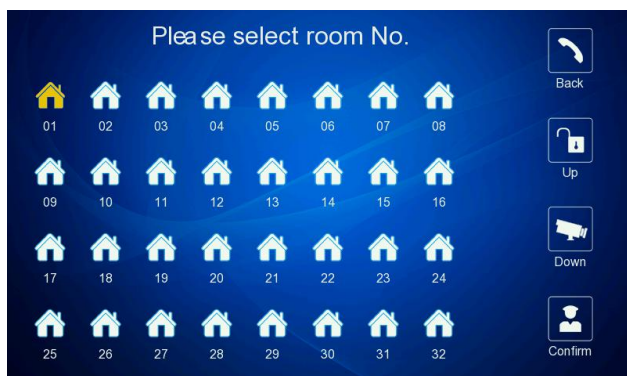


Please select floor

01 02 03 04

Back Up Down Confirm

Choose room number. & confirm



Please select room No.

01 02 03 04 05 06 07 08

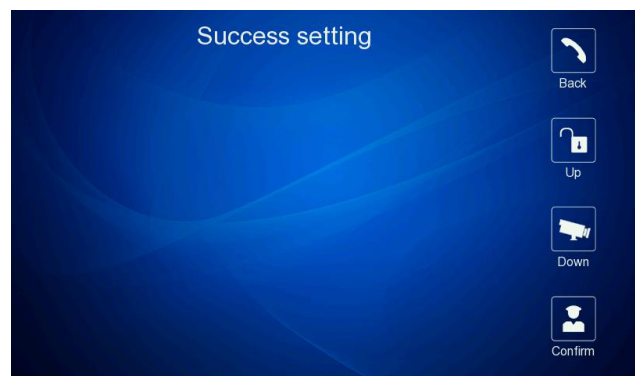
09 10 11 12 13 14 15 16

17 18 19 20 21 22 23 24

25 26 27 28 29 30 31 32

Back Up Down Confirm

Setting successful and back from menu



Success setting

Back Up Down Confirm

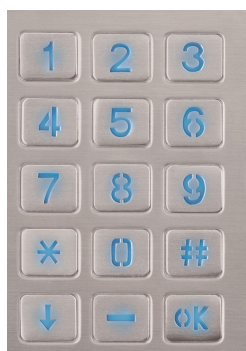
3. Outdoor Panel Configure

3.1 Digital keypad outdoor panel Configuration Instruction



3.1.1 Enter the engineer configure menu.

- Dial "00000000" and "#" on the keypad, to enter the engineer configure password box.

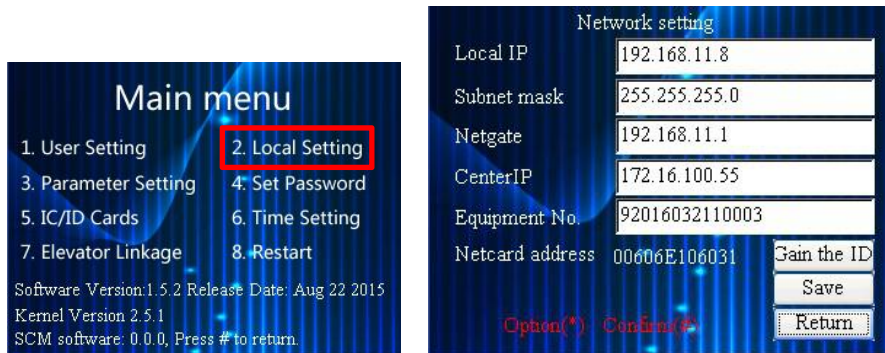


Enter default engineer password "111111" to enter the setting menu



3.1.2 Configure the local device IP.

Choose “Local Setting” to enter IP configuration menu



User could enter the IP address and other configuration date in this menu manually.

User could enter the configuration date in this menu according the IP list which generated by “management center”
Long press “0” to enter the “.”

Equipment No. is generated when production. Please do not change.

After configuration, choose save to finish.

3.1.3 Room number setting

Choose “User Setting” to enter next menu



Here is the list which download from the management center software.

User could check the list, if there is not any mistake or missing room, then user could ignore the setting menu on left.

User could add a room No. and edit the IP address for the room.

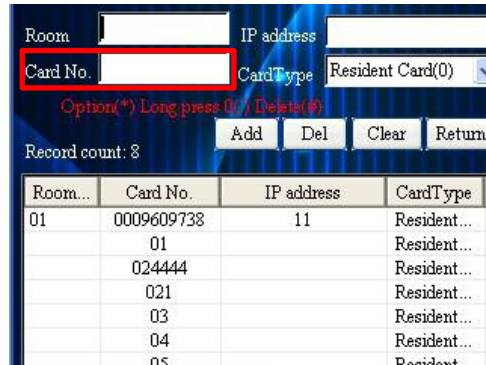
Choose “Add” to add the new room No. to right side room list.

NOTE: At the project site, the engineer always configure all indoor monitor and room no. by

“management center “ software, but if the engineer need add a temporary room no, he could also operate in this menu.

3.1.4 IC/ID card setting

NOTE: At the project site, the engineer always issue the access card through “management center” software.
But if necessary, engineer also could issue access card in this menu.



wiping the access card to read the card no in this blank

Choose “Add” to add the swiped access card in to the list

This list are the access card information which be issued by management center software

3.1.5 Password setting



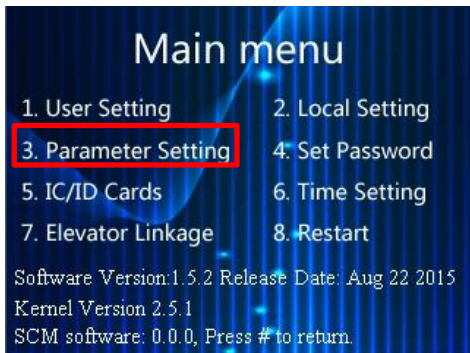
Engineer setting password, the default password is: 111111

Access password setting, the default password is: 111111

NOTE: During using the user could dial “*” + “#” to enter access password box.

3.1.6 System setting

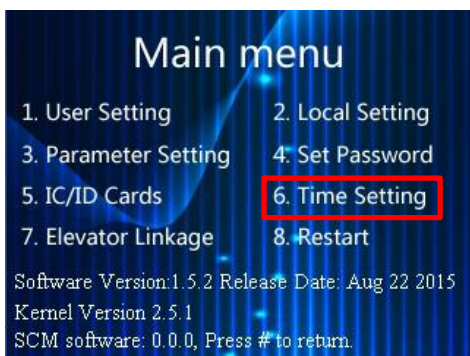
NOTE: In this menu, engineer could setting the system language, voice volume, image FPR, and door detector, etc.



Choose to enter the system setting

3.1.7 Date and time setting

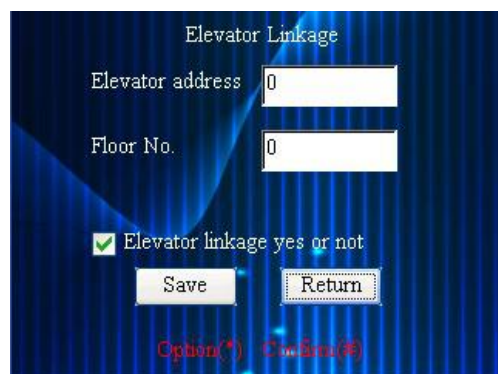
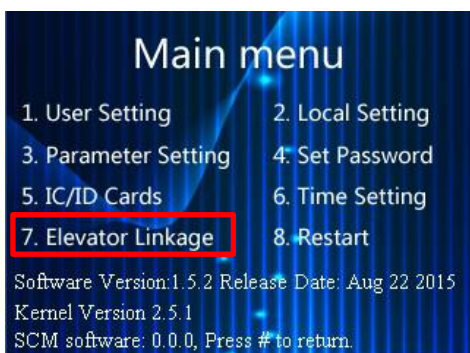
Choose to enter the system setting



3.1.8 Elevator linkage setting

Fill the door station information and elevator address.

Mark this option to start elevator linkage.



NOTE: Elevator linkage function, need protocol joint with the elevator manufacture before product production. After then, this function could be effective.

3.2 Digital touch screen outdoor panel Configuration Instruction



3.2.1 Main interface is introduced

Preparation: Connect the Outdoor Station and make sure the power wire connecting correct, the cable ends must be corresponded with the ports.

The Standby screen of U9 D-H is a show page. It is main for information published and the functional icons.



- 1). The time is display on the top of screen.
- 2). The upper half screen is media display area, support MP4 video and JPG image display and touch this area will entry the Dialing interface.
- 3). The under half screen is a text display area, User could publish community notice and words advertisement at this area
- 4). There are 3 buttons: for function buttons:



dial, unlock, and local setup



3.2.2 Enter the engineer configure menu

Touch the  button and input the passwords and touch  for unlocking, entry the main interface of system setting (the initial passwords is: 111111)



3.2.3 Configuration of IP address (For Information and Notice Publish)

Touch “IP Setting” Entry the local IP setup, input the IP code, Subnet Mask, Gateway code and Management Center IP address



Touch “Obtain Local ID” to gain the equipment ID from Management Center. Waiting for system prompts that the ID gained successfully, then touch “confirm” to finish the configuration.

Note: Please gain the IP address from Management Center PC side or contact your administrator.

3.2.4 User IP comparison Table

Before dial on the outdoor station, user should setup IP comparison table. Please back to main interface of the system touch “User IP Table” to set up the comparison table as bellow:



Enter the Call number corresponding to the IP address and room number, touch “Add” then you can add a new call number. When calling, just enter the call no, meanwhile, the candidate list will display the room no. which corresponded with call no. as like bellow:



Touch the article upper the interface of comparison table, the article detail text will display under the article. The user could modify or delete the text through touch the related buttons.

Touch “clear” will clear all comparison IP configurations, or entry the searching information and touch “search” will display corresponding information.

Note: Please add and operate mass configuration through Management Center Side.

3.2.5 System figure setting

Entry the system figure setting, user can adjust ringing, media and volume.

Touch text box to modify the video fps and code rate.

Touch “+” “-” buttons to modify the time or touch text box enter manually



The advertisement display is a important function of the outdoor station, there are 2 parts in the setting, The interface is as the picture;

- 1) Advertisement display setting: The default status of the system is advertisement off, Please set up it by user's needs.
- 2) When the video and the pictures are all not were chosen, the main interface will display default picture of system.
- 3) When any of the files be chosen, the documents will be displayed one by one. If the file was lost, it will display a default pictures.
- 4) When chosen all files, the system will display all the documents one by one.
- 5) The advertisement volume could be adjusted in the “night mode”

Note: The system only support MP4 format for video, jpg format for picture

3.2.6 Password setting

The system passwords and unlock passwords setting;

Enter new password in the text box and touch “confirm” to finish your setting



3.2.7 Lift Linkage

When the lift linkage start, user could call the lift running to pointed floor.



3.2.8 Time setting

Touch “+” “-” buttons to modify the time or touch text box enter the figures manually, Touch “confirm” to finish.



3.2.9 Auto Restart

When choose this function the system will restart by the set time.



3.2.10 Restart system

If the user need restart the system, he could choose this item and touch “confirm” the system will be restarted and enter the standby interface. It also could be restarted by a computer command which delivered form Management Center side.



3.2.11 ID Card figure setting


ID card figures could download from Management Center, and also could be modify at this interface.




3.2.12 Operation Instruction



A. Call Resident



When use intercom function, touch  button, or touch the media display area, to entry the dial interface as bellow:




1) Enter the call no. touch  to call the resident. Waiting for the resident answer or unlock, the conversation time is 100 seconds, If there is no answer, the system turn to message leave option menu, the visitor could leave message or hang off, The message time is 30 seconds.


2) Touch  could delete the input No., touch  back to standby interface.

3) When dialing, the camera will began working

4) If no operation in dial interface than 30 seconds, the system will back to standby interface

B. Call Management Center




Touch  at standby interface, enter "0000" and then calling.



Or touch  to call management center directly.

C. Unlock

1) Intercom unlock, the user could unlock by indoor monitor or call management center to unlock.

2) Public Password Unlock:

Touch  at standby interface, entry the unlock interface, or touch  at dial interface, and then enter public password and then touch  to unlock.

The system will have a voice remind that unlocking success. (Initial Public password:111111. Touch  can delete the password, touch  can turn back the standby interface.

D. Monitoring

When Management center monitor the outdoor station, the system turn to monitor interface and the camera began working and transfer the information to Management center





Notice

- 1) According to the specific building plan to make the whole data (such as the total number of households is less than 255, make the intercom IP addresses C grade, and recommend to use the IP address IP addresses B grade, as it maximum support about 65000 rooms).
- 2) Intercom gateway default use 172.16.0.1, Subnet mask 255.255.0.0, the Area Outdoor unit and management center with IP segment 172.16.0. XXX.
- 3) According to the building code or Unit code to configure it's IP addresses, such as Building No.5 setting it with IP segment 172.16.5.XXX, and Building No.8 setting it with IP segment 172.16.8.XXX
- 4) Setting the IP address for the outdoor unit, consider it easy for the maintenance, such as 172.16. X.11, 172.16. X.12 respectively corresponding to a layer of the lobby at the gate of no. 1, no. 2.
- 5) Consider the Indoor monitor extension and Room outdoor device for each project requirement, it could be relevant with the host indoor monitor IP address.
- 6) Generated the room and outdoor unit IP code table, it will helpful for the maintenance.
- 7) Each time with the data update, please make the backup by time index, if necessary copy the backup file to the U disk (storage), in case of the PC crash (management center), it will be great helpful.