

Universal Remote Controller

Instructions

Before using this device, please read this manual and properly stored it for future reference

Model: TC-U9HW-A

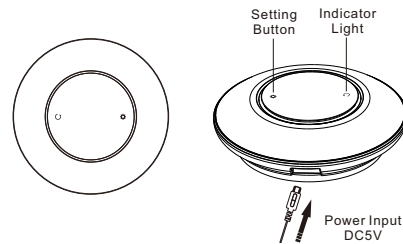
1. Products description

The universal remote controller, working with the IR signal learning and control, and connect to the home automation terminal via Wifi, and the IR signal with 360° covered, to realize the wireless remote control for the IR controlled device as TV, AC, DVD, Music System and etc. to provide a convenient life for people.

2. Features

- 1). Delicate and easy to install, can replace the original IR controller for the device.
- 2). Support 6 group of different type IR controller learning.
- 3). Build-in with gateway, available to working alone.
- 4). Support remote control by smart home control terminal and the relative APP.

3. Product appearance and structure



4. Operation Instruction

- 1). Start up
Connect the device to the power adapter DC5V (USB port) after 10 sec the device will complete the start.
- 2). Connect to the Wifi router
a. install the Wifi Guide APP, following to download:



6). Control the device from indoor monitor

The Learned IR Controller will auto create an icon on the smart home interface, touch the icon to enter the controller menu, the learned button will high light with blue color, and the unlearned button will in gray color. Press the learned button from the indoor monitor to send the control command to the remote controller, and the remote controller will send the IR signal to the relative device to be controlled.



7). Back to the factory default setting

When power off the device, press the setting button, and then power on the device, keep press the setting button till red indicator light continue ON, then release the setting button, and the red indicator light will be OFF, now back to factory default setting is completed.

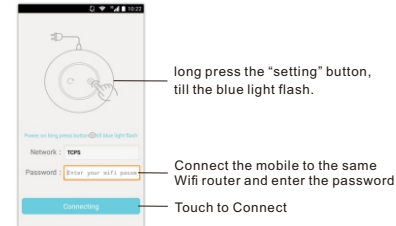
5. Product specification

Working Voltage	DC 5V USB
Support max IR signal type	6 Group
Wifi Standard	IEEE802.11 b/g/n
Static electricity power consumption	< 1.3W
Working temperature	-10 ~ +55°C
Working humidity	10% ~ 95%
Storage temperature	-20 ~ +70°C
Dimension	120*33mm

Notice:

- 1). The remote controller required the wifi connect, make sure it connect to the same wifi of the control terminal.
- 2). The IR control distance about 7-9M, suggest to install on the ceiling or on the table, to avoid any barrier.

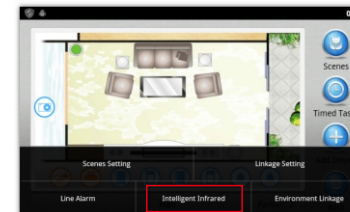
b. make the device in Wifi Guide mode



(Note: when repower the device, it will auto connect to the Wifi)

3). Connect to the home automation terminal

Connect the control terminal (indoor monitor) to the same Wifi router, and enter the smart home menu, then press the "menu" button to select the "intelligent infrared" sub-menu.



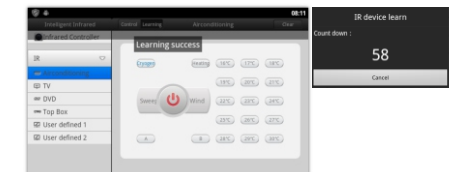
4). Configure the remote controller

The indoor monitor will auto search the online (same wifi network) remote controller, we can rename it and configure it to the selected room, and then add it.



5). Learning the signal from the IR controller

Select one of the IR group, and enter it's learning interface, then learning each IR signal code one by one, also can press the "clear" button to clear all learned signal.



Note: operate your original IR controller within 60 sec. it will show "learning success" when receive the IR signal and the red indicator light will flash one time.